

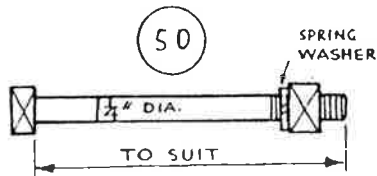
# PERMANENT WAY NOTES.

# BOLTS, ETC. (1)

2ND E

THESE NOTES ARE INTENDED FOR THE GUIDANCE AND ASSISTANCE OF STAFF ENGAGED UPON PERMANENT WAY WORK. THEY DO NOT IN ANY WAY MODIFY, SUPPLEMENT OR AMEND THE INSTRUCTIONS LAID DOWN IN E.D.I., STANDARD DRAWING CIRCULARS ETC., WHICH SHOULD BE REFERRED TO IN ALL CASES.

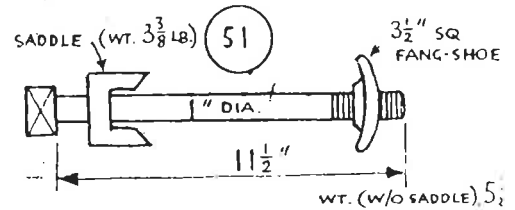
## CROSSING BOLT. (FOR ORDINARY AND ELBOW CROSSINGS)



ALSO SUPPLIED 1" DIA. (FOR 68<sup>D</sup>, TV95 AND RR95)  
(NOTE RAIL SECTION WHEN ORDERING LATTER)

R162/770

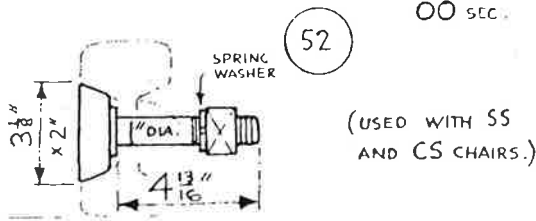
## CROSSING NOSE HOLDING-DOWN BOLT (WITH OR WITHOUT SADDLE)



WHEN ORDERED WITH SADDLE, STATE IF VEE IS 00<sup>A</sup> SEC. (1" WE

R 4544

## FLATHEAD BOLT FOR SWITCH CHAIR. OO SEC.

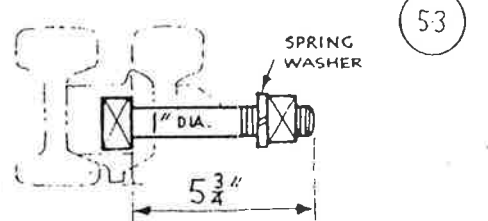


WT 2 1/4 LBS.

N.B. ON NEW SWITCHES AND CROSSINGS THE BOLTS HAVE SPECIAL LOCK NUTS INSTEAD OF SPRING WASHERS

R1324

## SWITCH-BLOCK BOLT.

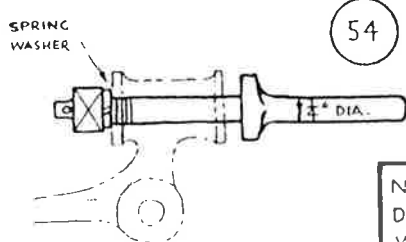


WT. 1 3/4 LBS.

(FOR SS CHAIR.)

R1334

## 1 1/4" SCREWED END FOR ROUND TYPE STRETCHER-BAR.

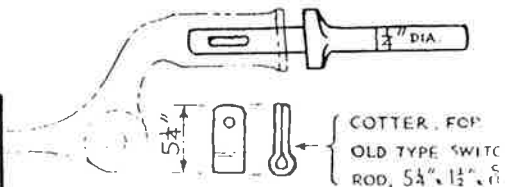


WT. 6 1/4 LBS.

N.B. STATE LENGTH & DIA. OF ALL BOLTS ETC. WHEN ORDERING.

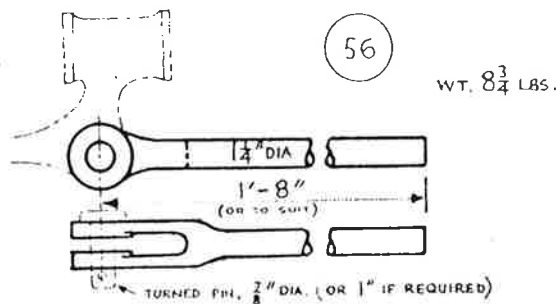
SN 55751

## 1 1/4" COTTERED END FOR OLD TYPE STRETCHER-BAR.



SN 17191

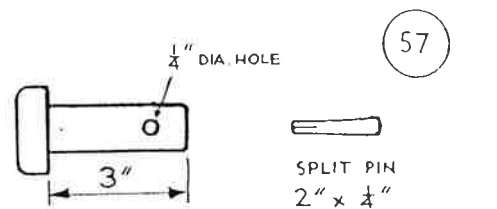
## STANDARD 1 1/4" JOINT.



WT. 8 3/4 LBS.

R2715

## TURND PIN FOR STANDARD 1 1/4" JOINT.

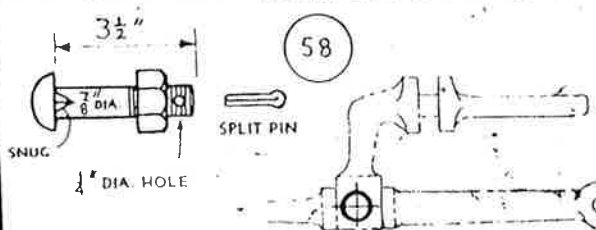


STATE WHETHER 1" OR 7/8" DIA.

WT. 3/4 LB.

R1331

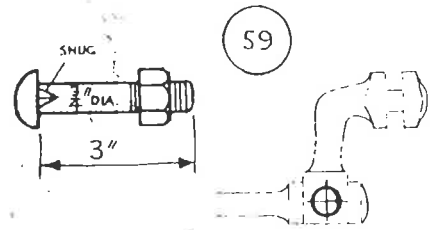
## BOLT FOR FRONT COMPOUND STRETCHER-BAR.



WT. COMPLETE, 1 1/8 LBS.

R1361

## BOLT FOR BACK COMPOUND STRETCHER-BAR.



WT. 3/4 LB.

R1349