

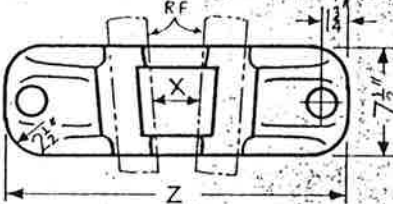
PERMANENT WAY NOTES.

CHAIRS (1)

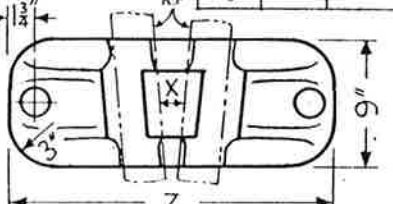
CROSSING CHAIRS

THESE NOTES ARE INTENDED FOR THE GUIDANCE AND ASSISTANCE OF STAFF ENGAGED UPON PERMANENT WAY WORK. THEY DO NOT IN ANY WAY MODIFY, SUPPLEMENT OR AMEND THE INSTRUCTIONS LAID DOWN IN E.D.I., STANDARD DRAWING CIRCULARS ETC., WHICH SHOULD BE REFERRED TO IN ALL CASES.

IC ETC.	IC COMP. <small>Sm 10302</small>						IC <small>Sm 12835</small>						IAC <small>Sm 11905</small>		
	N	X	Z	N	X	Z	N	X	Z	N	X	Z	N	X	Z
ORDER AS :- IC 6½, IAC 12, IC COMP 7½, ETC.	6½	6¾	2'-3½"	5½	10½"	2'-7"	7½	7½"	2'-4"	10½	4½"	2'-1½"	11½	3½"	2'-0"
	7½	7½"	2'-4½"	5½	9½"	2'-6½"	7½	6½"	2'-3½"	11	4½"	2'-1½"	12	3½"	2'-0"
	8	7½"	2'-4"	5½	9½"	2'-6"	8	6½"	2'-3½"	11½	6½"	2'-3½"	12½	3½"	2'-0"
				6	8½"	2'-5½"	8½	6½"	2'-3½"	12	6½"	2'-3"	13	3½"	1'-11"
				6½	8½"	2'-5"	8½	6½"	2'-3"	12½	5½"	2'-2½"	13½	3½"	1'-11"
				6½	8½"	2'-4½"	8½	6½"	2'-3"	13	5½"	2'-2½"	14	3½"	1'-11"
				6½	7½"	2'-4½"	9	5½"	2'-2½"	14	5½"	2'-2"	14½	3½"	1'-11"
				7	7½"	2'-4"	9½	5½"	2'-2½"	15	4½"	2'-1½"	15	2½"	1'-11"
				7½	7½"	2'-4"	10	4½"	2'-1½"	16	4½"	2'-1"	16	2½"	1'-11"



2C	N			X			Z			N			X			Z		
	N	X	Z	N	X	Z	N	X	Z	N	X	Z	N	X	Z			
ORDER AS :- 2C 8, 2C 13½ ETC.,	2	-	-	2½	8½"	2'-5½"	4½	5½"	2'-2"	7	3½"	2'-0"	10½	2½"	1'-10"			
	2½	11½"	2'-8"	2½	-	-	4½	4½"	2'-1½"	7½	3½"	2'-0"	11	2½"	1'-10"			
	2½	-	-	3	7½"	2'-4½"	4½	4½"	2'-1½"	7½	2½"	1'-11½"	11½	2½"	1'-10"			
	2½	-	-	3½	-	-	5	4½"	2'-1"	7½	2½"	1'-11½"	12	2½"	1'-10"			
(NB. FOR 1 IN 9½-11 2C CHAIR IS AT KNUCKLE)	2½	9½"	2'-6½"	3½	7"	2'-3½"	5½	4½"	2'-1"	8	2½"	1'-11½"	12½	2½"	1'-10"			
	2½	-	-	3½	6½"	2'-3½"	5½	3½"	2'-1"	8½	2½"	1'-11½"	13	2½"	1'-10"			
				3½	6½"	2'-3"	5½	3½"	2'-0½"	8½	2½"	1'-11"	13½	2½"	1'-10"			
				3½	6½"	2'-3"	6	3½"	2'-0½"	8½	2½"	1'-11"	14	2½"	1'-10"			
				3½	5½"	2'-2½"	6½	3½"	2'-0½"	9	2½"	1'-10½"	14½	2½"	1'-11"			
				3½	-	-	6½	3½"	2'-0"	9½	2½"	1'-10½"	15	2½"	1'-11"			
				4	5½"	2'-2"	6½	3"	2'-0"	10	2½"	1'-10½"	16	2½"	1'-11"			



3C OBSOLETE. SLAB AND BRACKET USED IN LIEU, AS SHOWN BELOW.

NOTE: ALL OO CROSSING CHAIRS HAVE - SEATING DEPTH 1 7/8", HEIGHT OF BOSS ABOVE BASE 1 3/8" AND ARE ALSO USED FOR BS 95 SECTION

**BC ETC.** ORDER AS FOLLOWS :-  
 BC OUTS (- TO - \*) A  
 OR, BC OUTS (- TO - \*) B  
 ("A" FOR R.H. SIDE OF VEE, "B" FOR L.H. SIDE OF VEE AS SHOWN BELOW)

**OTHER PATTERNS OF BC CHAIRS.** (WT. 25 LBS. EA.)

**BC OUTS**  
 (RAIL CANTED 1 IN 20 AWAY FROM BRACKET)

**BC INS**  
 (STATE IF REQD. FOR 1" DIA. OR 1 1/4" DIA. BOLT)  
 (RAIL CANTED 1 IN 20 TOWARDS BRACKET)

**BC GUARDS**  
 ALSO MADE TO ANGLES 4 1/2 TO 5 1/2, (A OR E) AND 6 TO 8, (A OR E)  
 (RAIL VERTICAL)