

PERMANENT WAY NOTES.

CHAIRS (2)

CROSSING OO CHAIRS SEC

THESE NOTES ARE INTENDED FOR THE GUIDANCE AND ASSISTANCE OF STAFF ENGAGED UPON PERMANENT WAY WORK. THEY DO NOT IN ANY WAY MODIFY, SUPPLEMENT OR AMEND THE INSTRUCTIONS LAID DOWN IN E.D.I., STANDARD DRAWING, CIRCULARS ETC., WHICH SHOULD BE REFERRED TO IN ALL CASES.

**4C ETC.**

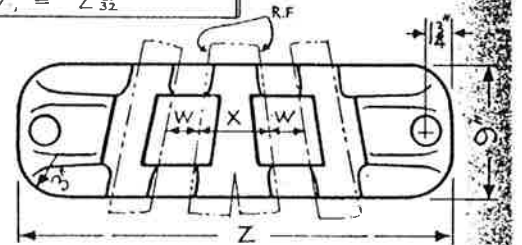
ORDER AS FOLLOWS,  
UP TO 1 IN 10 :-  
4C6½, 4C9, ETC.  
1 IN 10½ AND OVER :-  
4C11A, 4C12½ B, ETC.  
(“A” FOR R.H. CROSSINGS,  
“B” FOR L.H. CROSSINGS.)

	N	X	Z	N	X	Z	N	X	Z	N	X	Z	W
	2½	-	-	4¼	8½"	2'-10"	6¾	5¾"	2'-7"	9½	4¾"	2'-5½"	2½
	3	1'-0½"	3'-1"	4½	8¼"	2'-9½"	7	5½"	2'-6½"	10	4¾"	2'-5½"	2½
	3½	-	-	4¾	7½"	2'-9"	7¼	5¾"	2'-6½"	10½	3½"	2'-5¼"	2½
	3¾	11½"	3'-0"	5	7½"	2'-8½"	7½	5¾"	2'-6½"	11	3¾"	2'-5"	2½
	3½	-	-	5¼	7¾"	2'-8"	7¼	5½"	2'-6½"	11½	3¾"	2'-4¾"	2½
	3½	10½"	2'-11½"	5½	6¾"	2'-8"	8	4½"	2'-6¾"	12	3½"	2'-4½"	2½
	3½	10½"	2'-11"	5¾	6½"	2'-7½"	8¼	4½"	2'-6¼"	12½	3½"	2'-4½"	2½
	3¾	9¾"	2'-11"	6	6¾"	2'-7½"	8½	4½"	2'-6"	13	3½"	2'-4½"	2½
N.B. SLAB AND BRACKETS (SEE R.1734) USED IN PLACE OF 4C CHAIR ON CROSSINGS 1 IN 14½ AND OVER. (SINCE JUNE 1936 ON CROSSINGS 1 IN 11½ AND OVER.):	3¾	-	-	6¼	6¾"	2'-7½"	8¾	4½"	2'-6"	13½	3½"	2'-4½"	2½
	4	9½"	2'-10½"	6½	5¾"	2'-7"	9	4½"	2'-5¾"	14	3½"	2'-4"	2½

\* UP TO 1 IN 9½, DIMENSION W, = 2 15/32"

OTHER PATTERNS OF 4C CHAIRS, FOR EXTENDED WING RAILS FORMING CONTINUOUS CHECK RAILS.

- 4CNº1, USED WHEN W=1¾" ON L.H. SIDE OF CROSSING :-
- 4CNº2, USED WHEN W=1¾" ON R.H. SIDE OF CROSSING :-
- 4CNº3, USED WHEN W=1¾" ON BOTH SIDES OF CROSSING :-

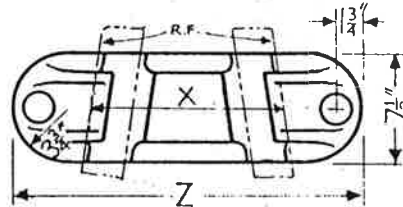


NOTE: ALL OO CROSSING CHAIRS HAVE, - SEATING DEPTH 1 7/8", HEIGHT OF BOSS ABOVE BASE 1 3/8", AND AXLE ALSO USED FOR BS95 SECTION

**5C**

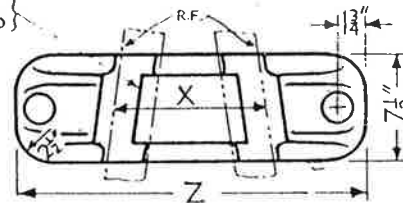
ORDER AS FOLLOWS :-  
5C 5½, 5C 8, ETC.,

1 IN 3½ TO  
1 IN 5¾ :-



JAW NOT REQD. FOR ANGLES ABOVE 1 IN 10

1 IN 6 TO  
1 IN 16 :-

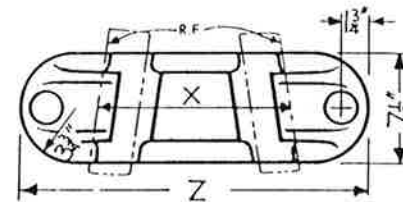


	N	X	Z	N	X	Z	N	X	Z
	3½	1'-7 17/32"	2'-6¼"	6¼	11¼"	2'-1"	10	7 9/32"	1'-9"
	3½	1'-6 7/8"	2'-5½"	6½	10 27/32"	2'-0½"	10½	6 15/32"	1'-8 1/2"
	3¾	1'-6 9/32"	2'-5"	6¾	10 15/32"	2'-0"	11	6 19/32"	1'-8 1/2"
	3½	-	-	7	10 1/8"	1'-11½"	11½	6 7/16"	1'-8"
	4	1'-5 3/16"	2'-4"	7¼	9 25/32"	1'-11¼"	12	6 3/32"	1'-8"
	4¼	1'-4 3/32"	2'-3"	7½	9 1/2"	1'-11"	12½	5 7/8"	1'-7 1/2"
	4½	1'-3 11/32"	2'-2¼"	7¾	9 3/8"	1'-10 3/4"	13	5 1/16"	1'-7 1/2"
	4¾	1'-2 19/32"	2'-1½"	8	8 15/16"	1'-10 1/2"	13½	5 1/2"	1'-7"
	5	1'-1 7/8"	2'-0½"	8¼	8 1/16"	1'-10 1/4"	14	5 1/32"	1'-7"
	5¼	1'-1¼"	2'-0"	8½	8 1/8"	1'-10"	14½	5 5/32"	1'-7 1/2"
	5½	1'-0 1/16"	1'-11½"	8¾	8 3/32"	1'-9 3/4"	15	5 1/2"	1'-6 1/2"
	5¾	1'-0 3/32"	1'-11"	9	8"	1'-9 1/2"	16	4 1/16"	1'-6 1/2"
	6	11 1/16"	2'-1½"	9½	7 7/8"	1'-9"			

**6C**

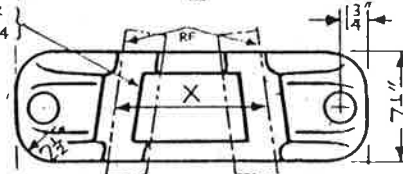
ORDER AS :- 6C 8, 6C11½, ETC.,

1 IN 5¼ TO  
1 IN 11 :-



JAW NOT REQD. FOR ANGLES ABOVE 1 IN 14

1 IN 11½ TO  
1 IN 16 :-



	N	X	Z	N	X	Z	N	X	Z
	5¼	1'-7 11/32"	2'-5½"	7¾	1'-11 1/32"	2'-0"	11½	9 1/8"	1'-10 1/2"
	5½	1'-6 1/2"	2'-4½"	8	1'-0 1/16"	1'-11½"	12	8 1/16"	1'-10"
	5¾	1'-5 3/4"	2'-4"	8¼	1'-0 3/8"	1'-11¼"	12½	8 3/8"	1'-10"
	6	1'-5"	2'-3½"	8½	1'-0 7/32"	1'-11"	13	8"	1'-9 1/2"
	6¼	1'-4 3/8"	2'-2½"	8¾	11 1/8"	1'-10 3/4"	13½	7 3/32"	1'-9 1/2"
	6½	1'-3 3/4"	2'-2"	9	11 1/16"	1'-10 1/2"	14	7 1/32"	1'-9"
	6¾	1'-3 1/32"	2'-1½"	9½	11"	1'-9 1/2"	14½	7 1/4"	1'-9"
	7	1'-2 1/4"	2'-1"	10	10 1/2"	1'-9 1/2"	15	7 1/2"	1'-8 1/2"
	7¼	1'-2 3/8"	2'-0½"	10½	9 15/16"	1'-8 1/2"	16	6 1/32"	1'-8"
	7½	1'-1¼"	2'-0¼"	11	9 3/32"	1'-8 1/2"			

**7C** SIMILAR TO 6C 1 IN 11½ - 1 IN 16 (WITH JAW) MADE ONLY IN ANGLES 14½, 15 & 16...