

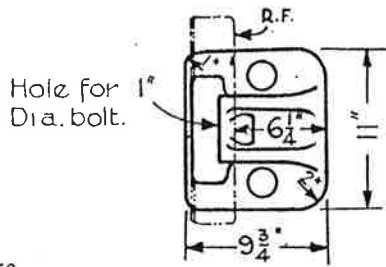
PERMANENT WAY
NOTES

CHAIRS (5) CS CHAIRS 00 SEC.

THESE NOTES ARE INTENDED FOR THE GUIDANCE AND ASSISTANCE OF STAFF ENGAGED UPON PERMANENT WAY WORK. THEY DO NOT IN ANY WAY MODIFY, SUPPLEMENT OR AMEND THE INSTRUCTIONS LAID DOWN IN E.D.I., STANDARD DRAWINGS, CIRCULARS ETC., WHICH SHOULD BE REFERRED TO IN ALL CASES.

NB. ALL CS CHAIRS ARE ALSO USED ON BS.95 RAIL & HAVE A SEATING DEPTH OF $1\frac{7}{8}$ " HEIGHT OF BOSS ABOVE BASE = $1\frac{3}{8}$ "

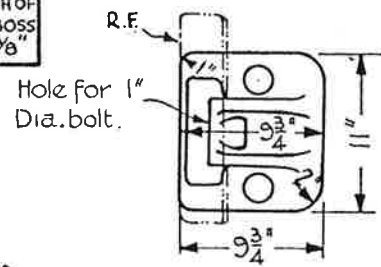
CS (INS)



WT. 47 LBS.

Sh 1886B.

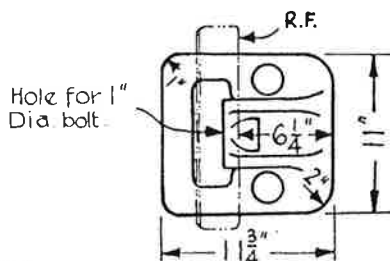
CS (OUTS)



WT. 47 LBS.

Sh 1886B.

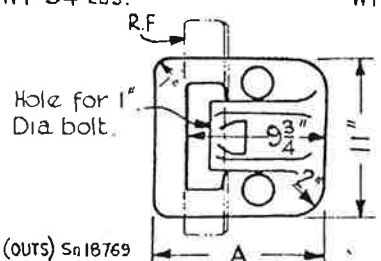
CS N°1 (INS)



WT. 54 LBS.

Sh 18769

CS N°1 (OUTS) & CS N°3 (OUTS)
WT 54 LBS. WT 51 LBS.

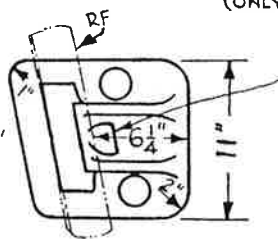


CS N°1 (OUTS) Sh 18769
CS N°3 (OUTS) R. 7091.

A
CS N°1 - $11\frac{3}{4}$ "
CS N°3 - $10\frac{3}{4}$ "

CS N°1 (INS) 6A*
(ONLY 1 IN 6 MADE)

* Also made to opposite 'hand' and lettered:- CS N°1 (INS) 6 B.

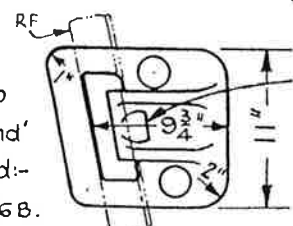


WT. 54 LBS.

Sh 18769.

CS N°1 (OUTS) 6A*
(ONLY 1 IN 6 MADE)

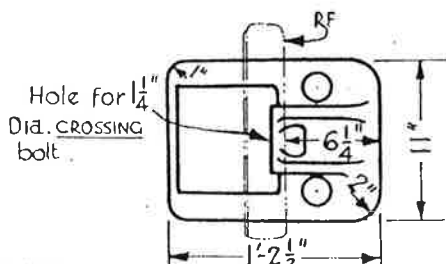
* Also made to opposite 'hand' and lettered:- CS N°1 (OUTS) 6 B.



WT. 54 LBS.

Sh 18769.

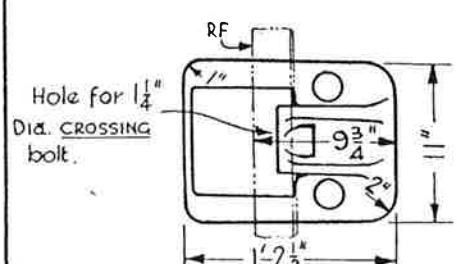
CS N°2 (INS)



WT. 68 LBS.

Sh 18811

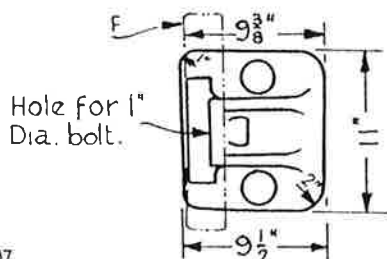
CS N°2 (OUTS)



WT. 68 LBS.

Sh 18811.

CS (VERT)



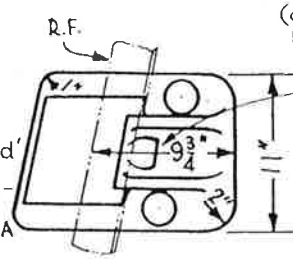
WT. 47 LBS.

R. 7097

NB. Rail Vertical.

CS N°2 (OUTS) 7B*
(ONLY 1 IN 7 MADE NO (INS) CHAIR.)

* Also made to opposite 'hand' and lettered:- CS N°2 (OUTS) 7A



WT. 68 LBS.

Sh 18811.

NB. CS chairs are supplied without blocks, bolts etc.. When ordered loose.

Amended FEB. 1937.

R. 1739A CIVIL ENGINEER'S OFFICE.

PADDINGTON.

FEB. 1937.