

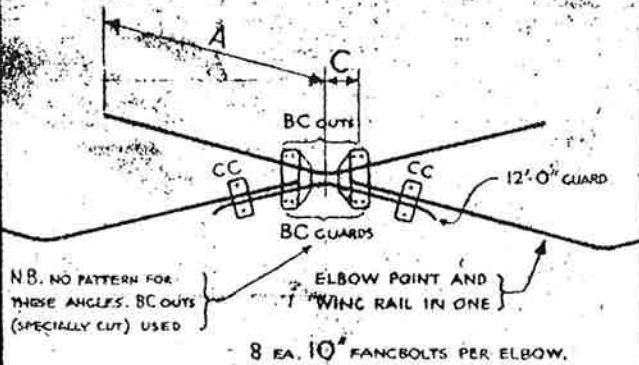
PERMANENT WAY NOTES

ARRANGEMENT OF ELBOW CHAIRS

FOR DETAILS OF CHAIRS SEE CHAIRS (6) DRG. NO. R 1180

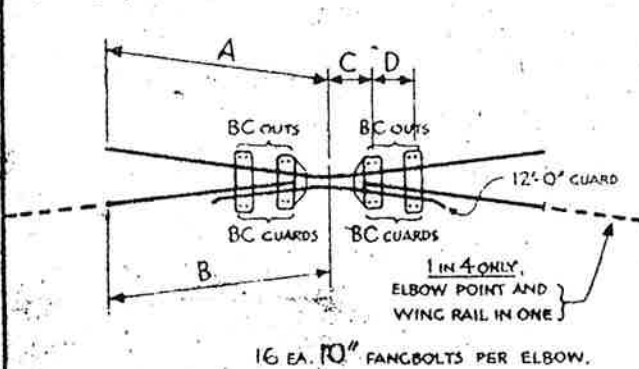
THESE NOTES ARE INTENDED FOR THE GUIDANCE AND ASSISTANCE OF STAFF ENGAGED UPON PERMANENT WAY WORK. THEY DO NOT IN ANY WAY MODIFY, SUPPLEMENT OR AMEND THE INSTRUCTIONS LAID DOWN IN E.D. STANDARD DRAWINGS, CIRCULARS ETC. WHICH SHOULD BE REFERRED TO IN ALL CASES.

2-3 3/8



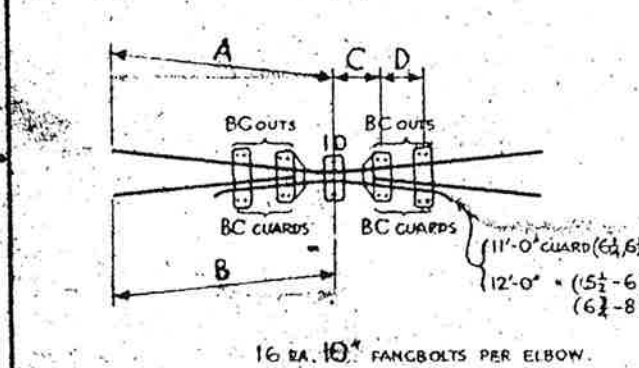
Sn 19098

4-5 1/4



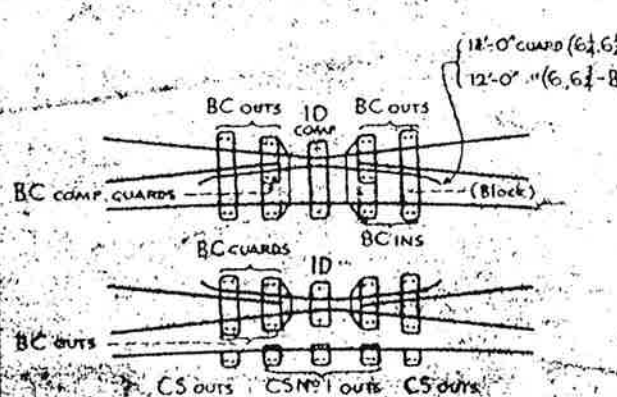
Sn 19098

5 1/2 - 8



Sn 19098

SINGLE COMPOUNDS (6-8)



FOR STANDARD DIAMONDS AND COMPOUNDS ONLY.

ANGLE	A"	B"	C"	D"
2	14'-0 1/4"	-	8 7/8"	-
2 1/8	14'-7 1/4"	-	9 1/8"	-
2 1/4	15'-1 1/4"	-	9 1/2"	-
2 3/8	15'-8 3/8"	-	9 3/8"	-
2 1/2	6'-7 3/4"	-	10 1/2"	-
2 5/8	7'-2 1/2"	-	10 13/16"	-
2 3/4	7'-9 1/2"	-	10 11/16"	-
2 7/8	8'-1 1/8"	-	11"	-
3	8'-8 1/4"	-	11 1/2"	-
3 1/8	9'-3 3/8"	-	11 5/8"	-
3 1/4	9'-10 1/2"	-	11 13/16"	-
3 3/8	10'-5 3/8"	-	1'-0 1/4"	-
3 1/2	11'-0 3/4"	-	1'-0 17/32"	-
3 5/8	11'-7 7/8"	-	1'-0 27/32"	-
3 3/4	12'-3"	-	1'-1 1/8"	-
3 7/8	12'-10 1/8"	-	1'-1 7/16"	-
4	13'-5 1/4"	-	1'-1 1/4"	2'-6"
4 1/4	14'-7 3/8"	12'-4 7/8"	1'-2 3/8"	2'-6"
4 1/2	15'-9 1/2"	13'-7"	1'-2 31/32"	2'-6"
4 3/4	12'-9 5/8"	14'-9 1/4"	1'-3 2/16"	2'-6"
5	13'-11 1/2"	15'-11 1/4"	1'-4 1/16"	2'-6"
5 1/4	15'-1 7/8"	17'-1 7/16"	1'-4 11/16"	2'-6"
5 1/2	14'-3"	18'-3 3/16"	1'-5 13/32"	2'-6"
5 3/4	15'-5 1/8"	19'-5 1/4"	1'-6"	2'-6"
6	10'-5 3/8"	8'-3 3/8"	1'-6 3/8"	2'-9"
6 1/4	10'-11 7/16"	8'-9 9/16"	1'-7 1/4"	2'-0"
6 1/2	11'-5 3/16"	9'-3 3/8"	1'-7 27/32"	2'-3"
6 3/4	11'-11 5/8"	9'-9 9/8"	1'-8 2/16"	2'-6"
7	12'-5 3/8"	10'-3 3/4"	1'-9 1/16"	2'-6"
7 1/4	12'-11 7/8"	10'-9 7/8"	1'-9 11/16"	2'-6"
7 1/2	13'-6"	11'-4"	1'-10 3/32"	2'-3"
7 3/4	14'-0 1/8"	11'-10 1/8"	1'-10 7/8"	2'-6"
8	14'-6 1/4"	12'-4 1/4"	1'-11 1/2"	2'-3"

DIMENSIONS A & B IN THIS RANGE THESE STANDARD DIMENSIONS SUIT STANDARD WING-RAILS IN STANDARD DIAMONDS THEY ARE USUALLY VARIED IN NON-STANDARD DIAMONDS

DIMENSIONS C & D IN THIS RANGE THESE STANDARD DIMENSIONS SUIT STANDARD DOUBLE-COMPOUNDS THEY ARE USUALLY VARIED IN NON-STANDARD DIAMONDS AND COMPOUNDS

DOUBLE COMPOUNDS (6-8)

