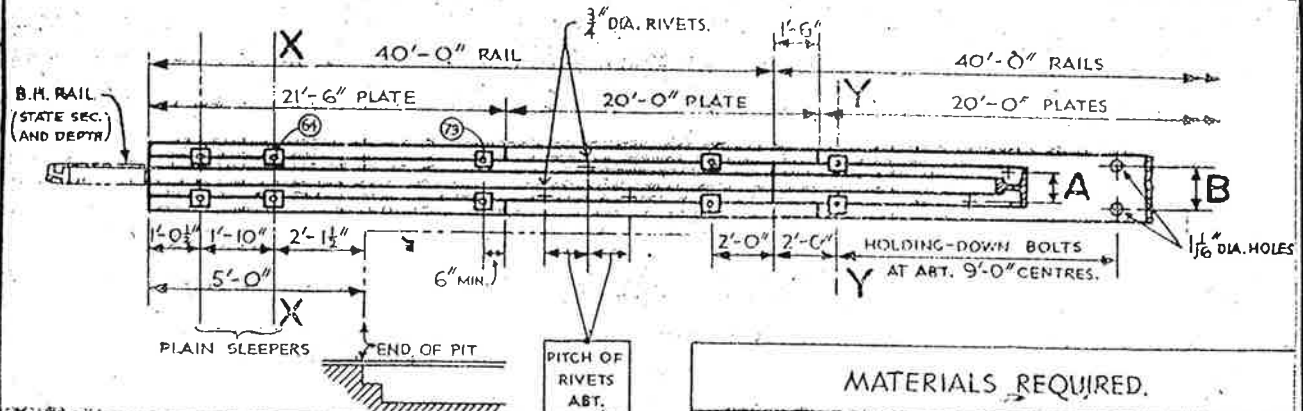


PERMANENT WAY NOTES.

ENGINE PITS:

THESE NOTES ARE INTENDED FOR THE GUIDANCE AND ASSISTANCE OF STAFF ENGAGED UPON PERMANENT WAY WORK. THEY DO NOT IN ANY WAY MODIFY, OR AMEND THE INSTRUCTIONS LAID DOWN IN E.D.I., STANDARD DRAWINGS, CIRCULARS ETC., WHICH SHOULD BE REFERRED TO IN ALL CASES.



PIT STRAIGHT (OR CURVED FLATTER THAN 1000' RAD.)	1'-6"
PIT CURVED, TO RADIUS OF 1000' OR SHARPER.	9"

NOTES.

- (1) ORDER BS.FB RAILS AND 10"x 5/8" M.S. PLATES SEPARATELY, ON SAME REQN., NOTED "RAILS TO BE RIVETED TO PLATES AS PER DIAGRAM ATTACHED"
- (2) ADD A MFG. DIAGRAM (ON TRACING CLOTH) OF COMPLETE PIT AS ABOVE, INCL. GUARD PLATES IF ANY.
- (3) SHOW CURVATURE IF ANY, AND DIMENSION SPECIAL SHORT RAILS AND PLATES FOR INNER RAIL, TO NEAREST 1/2"
- (4) ASSIGN REF. LETTER TO EACH RAIL AS AID TO REASSEMBLY.
- (5) USE BS 95 FB RAILS ON OUTSIDE PITS.
" " 80 " " " INSIDE " " "

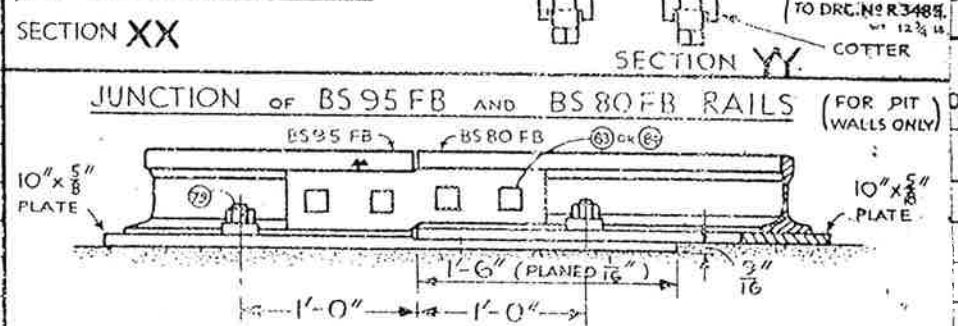
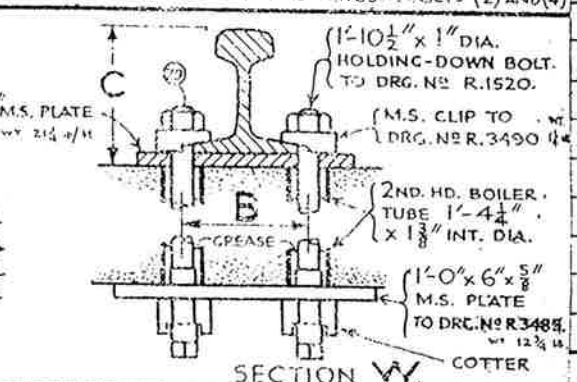
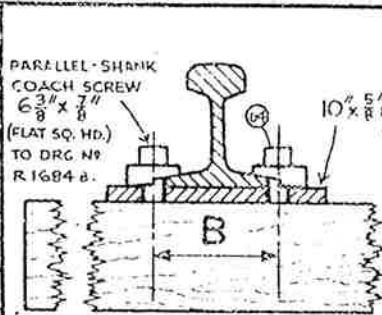
SEE STANDARD. DRGS. 8/33 AND 9/33, ALSO CIRC. 41/43221. 28-11-38.

MATERIALS REQUIRED.

REQN. I	B.S. ... F.B. RAILS. 10" x 5/8" M.S. PLATES. GUARD PLATES, COMPLETE WITH C.I. BLOCKS AND BOLTS FOR BS ... FB RAILS. [ALL ABOVE TO DIAGRAM]
REQN. II	M.S. CLIPS, TO DRG. NO R. 3490 M.S. PLATES, 1'-0" x 6" x 5/8", TO DRG. NO R. 3485 PARAL. SHANK COACH SCREWS, 6 3/8" x 7/8" DIA. WITH FLAT SQ. HEADS. TO DRG. NO R. 1684 B CREOD. PLAIN SLEEPERS. FISHPLATES FOR B.S. ... F.B. RAILS. (DRG. NO R. 3488-9) FISHBOLTS FOR B.S. ... F.B. RAILS. (DRG. NO R. 3665-6) JUNCTION FISHPLATES, COMPLETE WITH FISHBOLTS. HOLDING-DOWN BOLTS, 1'-10 1/2" x 1" DIA., COMPLETE WITH NUTS, COTTERS & M.S. TUBES, TO DRG. NO R. 1520.

THE SMALL RINGED FIGURES, THUS (1) ; REFER TO SKETCHES ON "PERMANENT WAY NOTES" R.1731 AND R.1733A "BOLTS (2) AND (4)

	BS 95 FB	BS 80 FB
CENTRES OF RIVETS A	3 3/4"	3 3/8"
CENTRES OF H.D. BOLTS B	5 3/4"	5 1/4"
TOTAL HEIGHT C	6 7/16"	5 7/8"
RAILS IN FOLLOWING STANDARD LENGTHS. (OR OTHERS IF REQD.)	45'-0" 40'-0" 33'-4"	45'-0" 40'-0" 32'-0"
10" x 5/8" PLATES IN FOLLOWING STANDARD LENGTHS.	31'-6" 30'-0" 21'-6" 20'-0"	30'-0"



GUARD PLATE ETC. AT PAVED PORTIONS.

