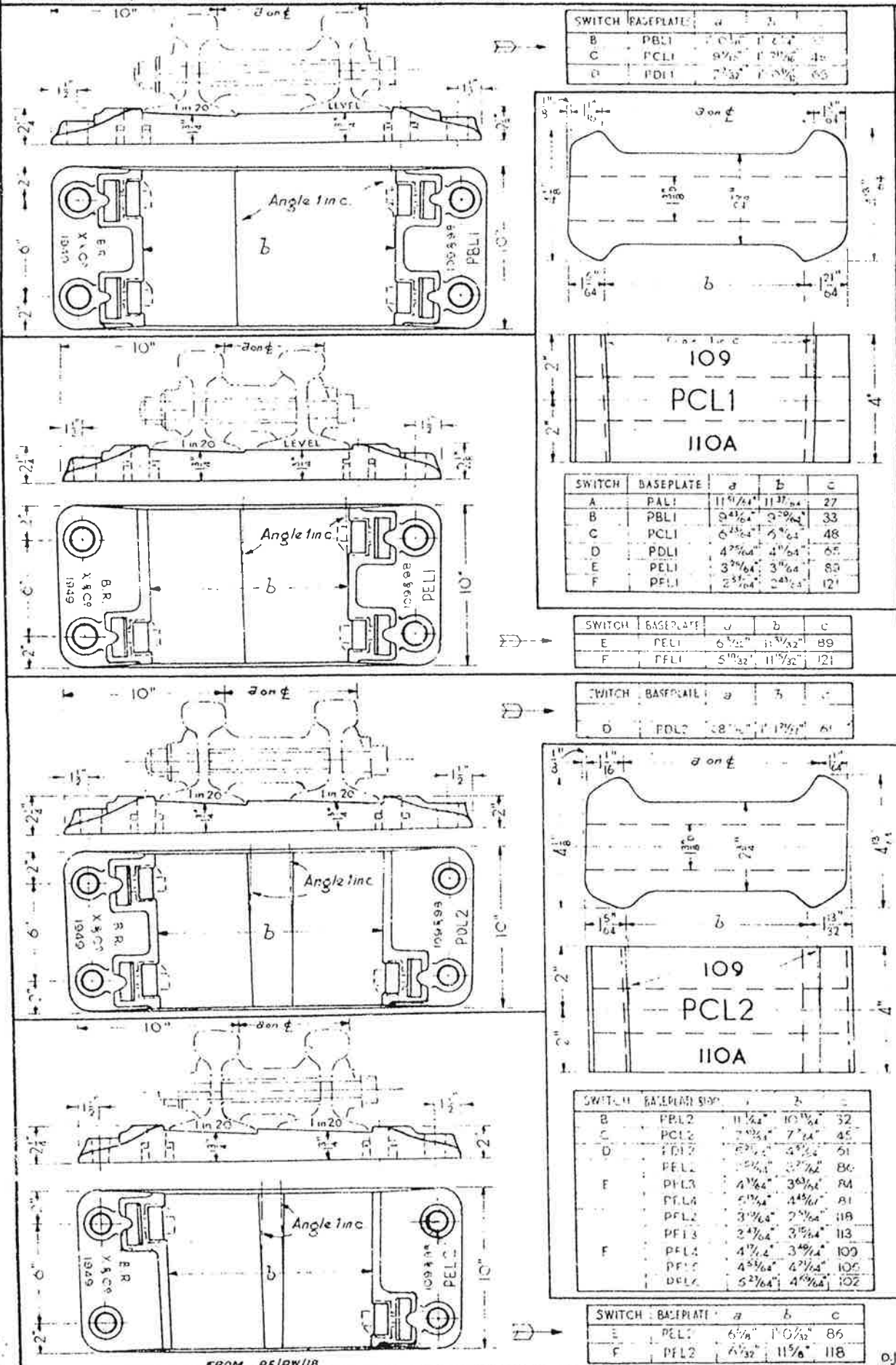


PERMANENT WAY NOTES

B.R. 109 FB. & B.S. 110A FB. SWITCHES - DETAILS of HEEL BASEPLATES & BLOCKS (1)

THESE NOTES ARE INTENDED FOR THE GUIDANCE AND ASSISTANCE OF STAFF ENGAGED UPON PERMANENT WAY WORK. THEY DO NOT IN ANY WAY MODIFY, SUPPLEMENT OR AMEND THE INSTRUCTIONS LAID DOWN IN E.D.I., STANDARD DRAWINGS CIRCULARS ETC., WHICH SHOULD BE REFERRED TO IN ALL CASES.



NOTE - Although only L.H. patterns are illustrated the dimensions are equally applicable to R.H. BASEPLATES & BLOCKS