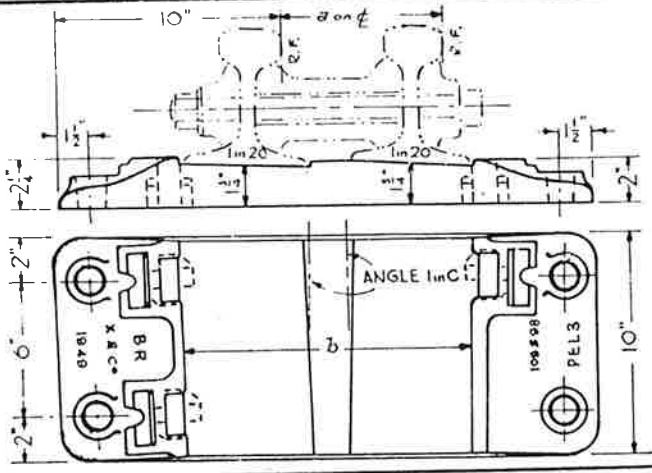


PERMANENT WAY NOTES

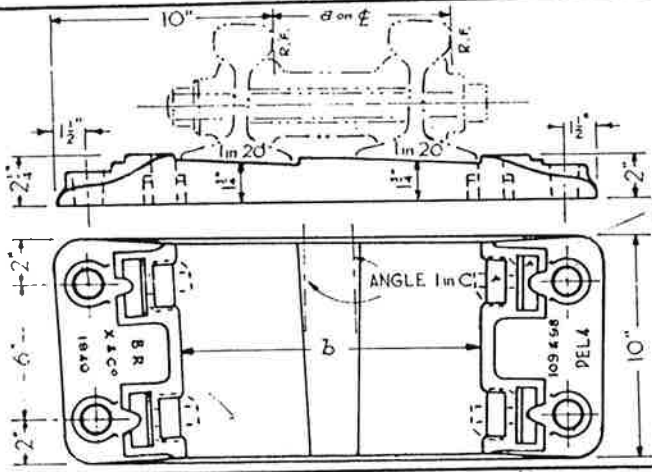
B.S.110A FB. SWITCHES - DETAILS OF HEEL BASEPLATES & BLOCKS

THESE NOTES ARE INTENDED FOR THE GUIDANCE AND ASSISTANCE OF STAFF ENGAGED UPON PERMANENT WAY WORK. THEY DO NOT IN ANY WAY MODIFY, SUPPLEMENT OR AMEND THE INSTRUCTIONS LAID DOWN IN E.D.I., STANDARD DRAWINGS, CIRCULARS ETC., WHICH SHOULD BE REFERRED TO IN ALL CASES.

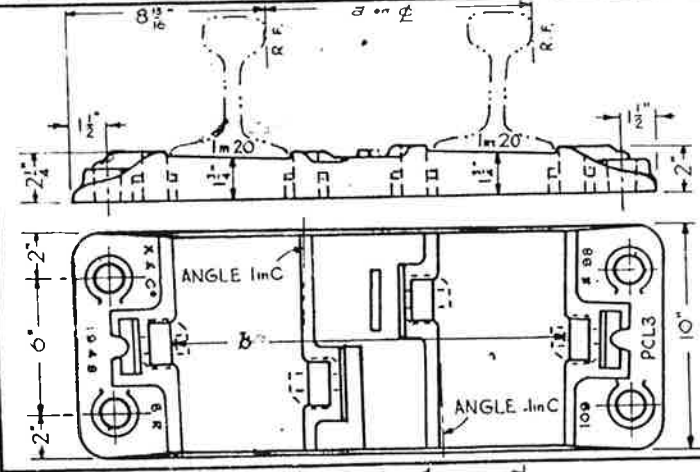


SWITCH	BASEPLATE	a	b	c
E	PEL 3	7 ¹ / ₃₂ "	1' - 0 ⁹ / ₁₆ "	64
F	PFL 3	6 ⁹ / ₃₂ "	1' - 0 ¹ / ₄ "	113

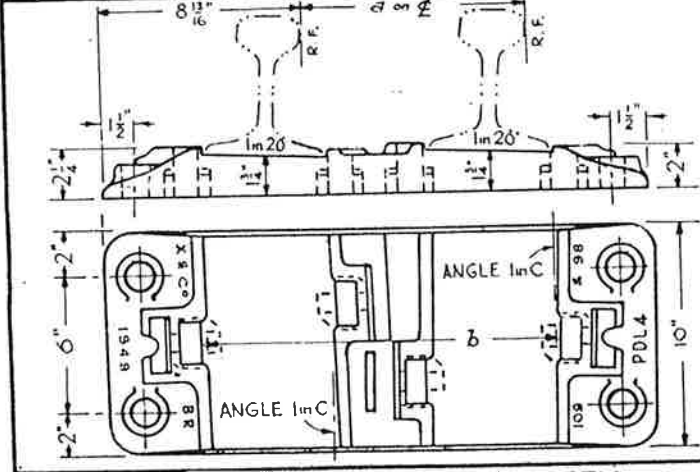
For details of the BLOCKS see per. way notes sheet no. R. 4294



SWITCH	BASEPLATE	a	b	c
C	PCL 2	10 ¹¹ / ₃₂ "	1' - 3 ¹ / ₁₆ "	45
E	PEL 4	7 ¹ / ₄ "	1' - 1 ¹ / ₃₂ "	81
F	PFL 4	7"	1' - 0 ⁹ / ₃₂ "	109
	PFL 5	7 ⁹ / ₁₆ "	1' - 1 ¹ / ₃₂ "	105
	PFL 6	8 ³ / ₃₂ "	1' - 1 ¹ / ₄ "	102



SWITCH	BASEPLATE	a	b	c
C	PCL 3	11 ¹ / ₃₂ "	1' - 5 ¹ / ₁₆ "	43
D	PDL 3	8 ¹ / ₂ "	1' - 2 ¹ / ₃₂ "	58
	PDL 5	10 ¹ / ₈ "	1' - 4 ¹ / ₃₂ "	53
E	PEL 5	8 ¹ / ₄ "	1' - 2 ¹ / ₃₂ "	77
	PEL 6	9 ¹ / ₃₂ "	1' - 3 ¹ / ₁₆ "	74
	PEL 7	10 ¹ / ₄ "	1' - 3 ¹ / ₃₂ "	72
	PEL 8	11 ¹ / ₃₂ "	1' - 4 ¹ / ₁₆ "	70
F	PFL 7	8 ¹ / ₄ "	1' - 2 ¹ / ₃₂ "	99
	PFL 8	9 ¹ / ₈ "	1' - 2 ¹ / ₃₂ "	95
	PFL 9	10 ¹ / ₃₂ "	1' - 3 ¹ / ₈ "	92
	PFL 10	10 ¹ / ₁₆ "	1' - 4 ¹ / ₃₂ "	89
	PFL 11	11 ¹ / ₈ "	1' - 4 ¹ / ₁₆ "	86



SWITCH	BASEPLATE	a	b	c
D	PDL 4	9 ¹ / ₄ "	1' - 3 ¹ / ₃₂ "	56

FROM RE/PW/18

D.J.L.

NOTE: Although only L.H. patterns are illustrated, the dimensions are to apply equally to R.H. patterns & blocks.