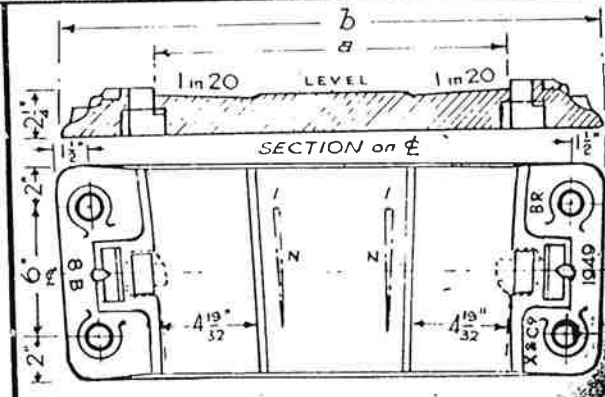
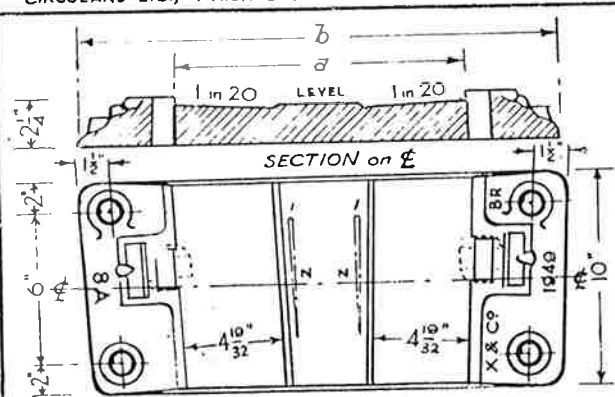


PERMANENT WAY  
NOTES

B.R.109 FB. &  
BS.110A FB.  
COMMON XING: ABCDEFGHJ&K

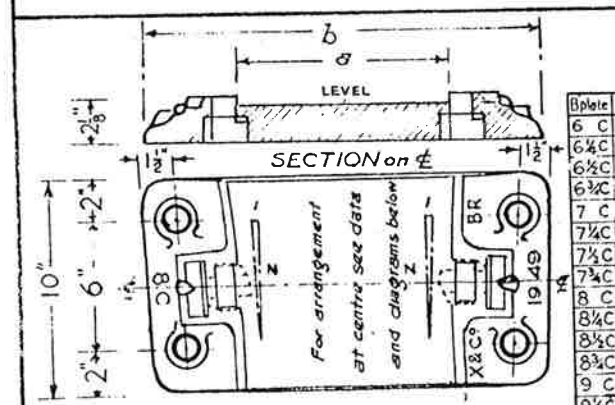
BASEPLATES for  
COMMON XING: ABCDEFGHJ&K

THESE NOTES ARE INTENDED FOR THE GUIDANCE AND ASSISTANCE OF STAFF ENGAGED UPON PERMANENT WAY WORK. THEY DO NOT IN ANY WAY MODIFY, SUPPLEMENT OR AMEND THE INSTRUCTIONS LAID DOWN IN E.D.I., STANDARD DRAWINGS, CIRCULARS ETC., WHICH SHOULD BE REFERRED TO IN ALL CASES.

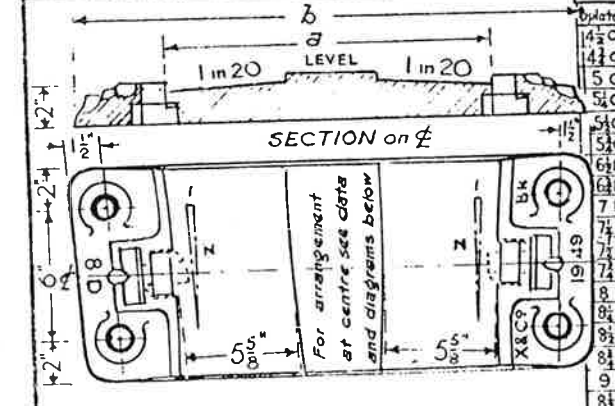


Bplate	a	b	N	Bplate	a	b	N	Bplate	a	b	N
4 A	1' 2 1/4"	1' 11 3/4"	8	7 A	1' 1 3/4"	1' 10 3/4"	14	11 A	1' 1 1/2"	1' 10 1/4"	22
4 1/4 A	1' 2 1/4"	1' 11 3/4"	8 5	7 1/4 A	1' 1 3/4"	1' 10 3/4"	14 5	12 A	1' 1 1/2"	1' 10 3/4"	24
4 1/2 A	1' 2 3/8"	1' 10 3/4"	9	7 1/2 A	1' 1 3/4"	1' 10 3/4"	15	13 A	1' 1 3/8"	1' 10 3/4"	26
4 3/4 A	1' 2 3/8"	1' 10 3/4"	9 5	7 3/4 A	1' 1 3/4"	1' 10 3/4"	15 5	14 A	1' 1 3/8"	1' 10 3/4"	28
5 A	1' 2 3/8"	1' 10 3/4"	10	8 A	1' 1 3/4"	1' 10 3/4"	16	15 A	1' 1 3/8"	1' 10 3/4"	30
5 1/4 A	1' 2 3/8"	1' 10 3/4"	10 5	8 1/4 A	1' 1 3/4"	1' 10 3/4"	16 5	16 A	1' 1 3/8"	1' 10 3/4"	32
5 1/2 A	1' 2"	1' 10 3/4"	11	8 1/2 A	1' 1 3/4"	1' 10 3/4"	17	17 A	1' 1 3/8"	1' 10 3/4"	34
5 3/4 A	1' 1 3/4"	1' 10 3/4"	11 5	8 3/4 A	1' 1 3/4"	1' 10 3/4"	17 5	18 A	1' 1 3/8"	1' 9 3/4"	36
6	1' 1 3/8"	1' 10 3/4"	12	9 A	1' 1 3/4"	1' 10 3/4"	18				
6 1/4 A	1' 1 3/8"	1' 10 3/4"	12 5	9 1/4 A	1' 1 3/4"	1' 10 3/4"	19	20 A	1' 1 3/8"	1' 9 3/4"	40
6 1/2 A	1' 1 3/8"	1' 10 3/4"	13	10 A	1' 1 3/4"	1' 10 3/4"	20	21 A	1' 1 3/8"	1' 9 3/4"	42
6 3/4 A	1' 1 3/8"	1' 10 3/4"	13 5	10 1/4 A	1' 1 3/4"	1' 10 3/4"	21				

Bplate	a	b	N	Bplate	a	b	N	Bplate	a	b	N
4 B	1' 9 3/4"	2' 6 3/4"	8	8 B	1' 5 1/4"	2' 2 1/4"	16				
4 1/2 B	1' 9 3/4"	2' 6 3/4"	8 5	8 1/2 B	1' 5 1/4"	2' 1 3/4"	16 5	20 B	1' 2 3/4"	1' 7 1/4"	40
4 3/4 B	1' 8 3/4"	2' 5 3/4"	9	8 3/4 B	1' 5 1/4"	2' 1 3/4"	17	21 B	1' 2 3/4"	1' 7 1/4"	42
4 1/2 B	1' 8 3/4"	2' 5 3/4"	9 5	8 5/4 B	1' 5 1/4"	2' 1 3/4"	17 5	10 C	1' 7 1/4"	2' 3 1/4"	32
5 B	1' 8 3/4"	2' 4 3/4"	10	9 B	1' 4 3/4"	2' 1 3/4"	18	11 C	1' 6 3/4"	2' 3 1/4"	34
5 1/4 B	1' 7 3/4"	2' 4 3/4"	10 5	9 1/4 B	1' 4 3/4"	2' 1 3/4"	19	12 C	1' 6 3/4"	2' 3 1/4"	36
5 1/2 B	1' 7 3/4"	2' 4 3/4"	11	10 B	1' 4 3/4"	2' 1 3/4"	20	13 C	1' 6 3/4"	2' 2 3/4"	40
5 3/4 B	1' 7 3/4"	2' 3 3/4"	11 5	10 1/4 B	1' 4 3/4"	2' 1 3/4"	21	14 C	1' 5 3/4"	2' 2 3/4"	42
6 B	1' 7 3/4"	2' 3 3/4"	12	11 B	1' 4 3/4"	2' 0 3/4"	22	15 C	1' 5 3/4"	2' 2 3/4"	30
6 1/4 B	1' 6 3/4"	2' 3 3/4"	12 5	12 B	1' 3 3/4"	2' 0 3/4"	24	16 C	1' 5 3/4"	2' 1 3/4"	32
6 1/2 B	1' 6 3/4"	2' 3 3/4"	13	13 B	1' 3 3/4"	2' 0 3/4"	26	17 C	1' 4 3/4"	2' 1 3/4"	34
6 3/4 B	1' 6 3/4"	2' 2 3/4"	13 5	14 B	1' 3 3/4"	2' 0 3/4"	28	18 C	1' 4 3/4"	2' 1 3/4"	36
7 B	1' 6 3/4"	2' 2 3/4"	14	15 B	1' 3 3/4"	2' 0 3/4"	30				
7 1/4 B	1' 5 3/4"	2' 2 3/4"	14 5	16 B	1' 3 3/4"	1' 11 3/4"	32	20 C	1' 4 3/4"	2' 0 3/4"	40
7 1/2 B	1' 5 3/4"	2' 2 3/4"	15	17 B	1' 3 3/4"	1' 11 3/4"	34	21 C	1' 4 3/4"	2' 0 3/4"	42
7 3/4 B	1' 5 3/4"	2' 2 3/4"	15 5	18 B	1' 2 3/4"	1' 11 3/4"	36				



Bplate	a	b	N	Type	Bplate	a	b	N	Type	Bplate	a	b	N	Type
6 C	1' 2 3/4"	1' 11"	12	III A	10 C	1' 6 3/4"	2' 0 3/4"	20	III A	21 D	8"	1' 4 3/4"	42	III A
6 1/4 C	1' 1 7/8"	1' 10 3/4"	12 5	III A	10 1/4 C	1' 6 3/4"	2' 0 3/4"	19	III A	14 E	1' 0 3/4"	1' 9 3/4"	28	III A
6 1/2 C	1' 1 7/8"	1' 10 3/4"	13	III A	10 1/2 C	1' 6 3/4"	2' 0 3/4"	20	III A	15 E	1' 1 1/8"	1' 8 3/4"	30	III A
6 3/4 C	1' 1 7/8"	1' 9 3/4"	13 5	III A	10 3/4 C	1' 6 3/4"	2' 0 3/4"	21	III A	16 E	1' 1 1/8"	1' 7 3/4"	32	III A
7 C	1' 0 3/4"	1' 9 3/4"	14	III A	11 D	1' 0 3/4"	1' 8 3/4"	22	III A	17 E	1' 0 3/4"	1' 7 3/4"	34	III A
7 1/4 C	1' 0 3/4"	1' 9 3/4"	14 5	III A	12 D	1' 0 3/4"	1' 8 3/4"	24	III A	18 E	1' 0 3/4"	1' 7 3/4"	36	III A
7 1/2 C	1' 0 3/4"	1' 8 3/4"	15	III A	13 D	1' 0 3/4"	1' 7 3/4"	26	III A					
7 3/4 C	1' 0 3/4"	1' 8 3/4"	15 5	III A	14 D	1' 0 3/4"	1' 6 3/4"	28	III A	20 E	9 3/4"	1' 6 3/4"	40	III A
8 C	1' 1 1/8"	1' 8 3/4"	16	III A	15 D	9 3/4"	1' 6 3/4"	30	III A	21 E	9 3/4"	1' 5 3/4"	42	III A
8 1/4 C	1' 1 1/8"	1' 8 3/4"	16 5	III A	16 D	9 3/4"	1' 6 3/4"	32	III A	18 F	1' 0 3/4"	1' 8 3/4"	36	III A
8 1/2 C	1' 1 1/8"	1' 7 3/4"	17	III A	17 D	9 3/4"	1' 5 3/4"	34	III A					
8 3/4 C	1' 1 1/8"	1' 7 3/4"	17 5	III A	18 D	8 3/4"	1' 5 3/4"	36	III A	20 F	11 3/4"	1' 7 3/4"	40	III A
9 C	1' 10 3/4"	1' 7 3/4"	18	III A					III A	21 F	10 3/4"	1' 7 3/4"	42	III A
9 1/4 C	1' 10 3/4"	1' 6 3/4"	19	III A	20 D	8 3/4"	1' 4 3/4"	40	III A	21 G	1' 1 1/8"	1' 6 3/4"	42	III A



Bplate	a	b	N	Type	Bplate	a	b	N	Type	Bplate	a	b	N	Type
14 C	1' 5 3/4"	2' 2 3/4"	9	IA	9 E	1' 4 3/4"	2' 1 3/4"	18	IA	18 G	1' 1 3/4"	1' 9 3/4"	36	IV
14 1/4 C	1' 4 3/4"	2' 1 3/4"	9 5	II A	9 1/4 E	1' 4 3/4"	2' 0 3/4"	19	II A					
15 C	1' 3 3/4"	2' 0 3/4"	10	II A	10 E	1' 3 3/4"	2' 0 3/4"	20	II A	20 G	1' 0 3/4"	1' 8 3/4"	40	IV
15 1/4 C	1' 3 3/4"	2' 0 3/4"	10 5	II A	10 1/4 E	1' 2 3/4"	1' 11 3/4"	21	II A	16 H	1' 4 3/4"	2' 1 3/4"	32	II
16 C	1' 2 3/4"	1' 11 3/4"	11	II A	11 E	1' 2 3/4"	1' 11 3/4"	22	II A	17 H	1' 3 3/4"	2' 0 3/4"	34	II
16 1/4 C	1' 2 3/4"	1' 10 3/4"	11 5	II A	12 E	1' 1 3/4"	1' 10 3/4"	24	II A	18 H	1' 2 3/4"	1' 11 3/4"	36	II
17 C	1' 5 3/4"	2' 2 3/4"	13	IA	13 E	1' 0 3/4"	1' 9 3/4"	26	IA					
17 1/4 C	1' 5 3/4"	2' 1 3/4"	13 5	IA	14 E	1' 5 3/4"	2' 1 3/4"	22	IA	20 H	1' 1 3/4"	1' 10 3/4"	40	IV
18 C	1' 4 3/4"	2' 1 3/4"	14	II A	15 E	1' 3 3/4"	2' 0 3/4"	24	II A	21 H	1' 0 3/4"	1' 9 3/4"	42	IV
18 1/4 C	1' 4 3/4"	2' 0 3/4"	14 5	II A	16 E	1' 2 3/4"	1' 11 3/4"	26	II A	17 J	1' 5 3/4"	2' 1 3/4"	34	I
19 C	1' 3 3/4"	2' 0 3/4"	15	II A	17 E	1' 2 3/4"	1' 10 3/4"	28	II A	18 J	1' 4 3/4"	2' 1 3/4"	36	I
19 1/4 C	1' 3 3/4"	2' 0 3/4"	15 5	II A	18 E	1' 1 3/4"	1' 9 3/4"	30	II A					
20 C	1' 2 3/4"	1' 11 3/4"	16	II A	19 E	1' 0 3/4"	1' 9 3/4"	32	II A	20 J	1' 3 3/4"	1' 11 3/4"	40	I
20 1/4 C	1' 2 3/4"	1' 11 3/4"	16 5	II A	20 E	1' 0 3/4"	1' 8 3/4"	34	II A	21 J	1' 2 3/4"	1' 10 3/4"	42	I
21 C	1' 2 3/4"	1' 10 3/4"	17	II A	21 E	1' 5 3/4"	2' 1 3/4"	26	IA					
21 1/4 C	1' 1 3/4"	1' 10 3/4"	17 5	II A	22 E	1' 4 3/4"	2' 0 3/4"	28	II A	20 K	1' 4 3/4"	2' 1 3/4"	40	I
22 C	1' 1 3/4"	1' 10 3/4"	18	II A	23 E	1' 3 3/4"	2' 0 3/4"	30	II A	21 K	1' 3 3/4"	2' 0 3/4"	42	I
22 1/4 C	1' 1 3/4"	1' 10 3/4"	18 5	II A	24 E	1' 2 3/4"	1' 11 3/4"	32	II A	21 L	1' 4 3/4"	2' 1 3/4"	42	I
23 C	1' 1 3/4"	1' 10 3/4"	19	II A					II A					

PLAN of INTERNAL ARRANGEMENT of SHOULDERS

