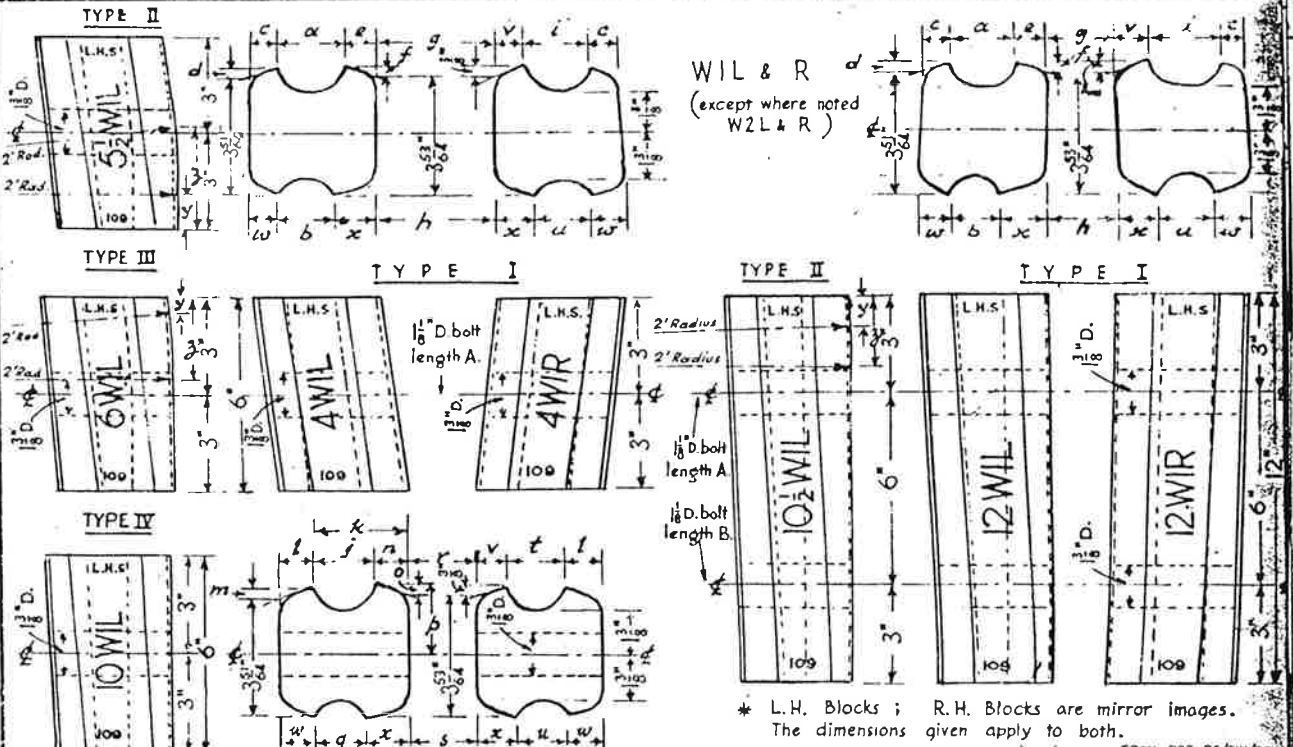


# PERMANENT WAY NOTES

B.R.109 F.B. & B.S.110A F.B.

# COMMON XING BLOCK INNER WING BLOCKS (2)

THESE NOTES ARE INTENDED FOR THE GUIDANCE AND ASSISTANCE OF STAFF ENGAGED UPON PERMANENT WAY WORK. THEY DO NOT IN ANY WAY MODIFY, SUPPLEMENT OR AMEND THE INSTRUCTIONS LAID DOWN IN E.D.I. STANDARD DRAWINGS, CIRCULARS ETC., WHICH SHOULD BE REFERRED TO IN ALL CASES.



CROSSING	TYPE	WIDE END											NARROW END											FROM ORG RE/PW/30	LENGTH OF BOLT	D									
		a	b	c	d	e	f	g	h	i	j	k	l	m	n	o	p	q	r	s	t	u	v				w	x	y	z					
lin 4	I	6"	2"	1 1/4"	5/8"	1/2"	3/8"	1/4"	3/16"	1/8"	3/16"	1/4"	1/2"	3/4"	1"	1 1/4"	1 1/2"	1 3/4"	2"	2 1/4"	2 1/2"	2 3/4"	3"	3 1/4"	3 1/2"	3 3/4"	4"	4 1/4"	4 1/2"	4 3/4"	5"	5 1/4"	5 1/2"	5 3/4"	6"
lin 4 1/2	I	6"	2"	1 1/4"	5/8"	1/2"	3/8"	1/4"	3/16"	1/8"	3/16"	1/4"	1/2"	3/4"	1"	1 1/4"	1 1/2"	1 3/4"	2"	2 1/4"	2 1/2"	2 3/4"	3"	3 1/4"	3 1/2"	3 3/4"	4"	4 1/4"	4 1/2"	4 3/4"	5"	5 1/4"	5 1/2"	5 3/4"	6"
lin 4 1/4	H	6"	2"	1 1/4"	5/8"	1/2"	3/8"	1/4"	3/16"	1/8"	3/16"	1/4"	1/2"	3/4"	1"	1 1/4"	1 1/2"	1 3/4"	2"	2 1/4"	2 1/2"	2 3/4"	3"	3 1/4"	3 1/2"	3 3/4"	4"	4 1/4"	4 1/2"	4 3/4"	5"	5 1/4"	5 1/2"	5 3/4"	6"
lin 5	II	6"	2"	1 1/4"	5/8"	1/2"	3/8"	1/4"	3/16"	1/8"	3/16"	1/4"	1/2"	3/4"	1"	1 1/4"	1 1/2"	1 3/4"	2"	2 1/4"	2 1/2"	2 3/4"	3"	3 1/4"	3 1/2"	3 3/4"	4"	4 1/4"	4 1/2"	4 3/4"	5"	5 1/4"	5 1/2"	5 3/4"	6"
lin 5 1/2	II	6"	2"	1 1/4"	5/8"	1/2"	3/8"	1/4"	3/16"	1/8"	3/16"	1/4"	1/2"	3/4"	1"	1 1/4"	1 1/2"	1 3/4"	2"	2 1/4"	2 1/2"	2 3/4"	3"	3 1/4"	3 1/2"	3 3/4"	4"	4 1/4"	4 1/2"	4 3/4"	5"	5 1/4"	5 1/2"	5 3/4"	6"
lin 6	III	6"	2"	1 1/4"	5/8"	1/2"	3/8"	1/4"	3/16"	1/8"	3/16"	1/4"	1/2"	3/4"	1"	1 1/4"	1 1/2"	1 3/4"	2"	2 1/4"	2 1/2"	2 3/4"	3"	3 1/4"	3 1/2"	3 3/4"	4"	4 1/4"	4 1/2"	4 3/4"	5"	5 1/4"	5 1/2"	5 3/4"	6"
lin 6 1/2	III	6"	2"	1 1/4"	5/8"	1/2"	3/8"	1/4"	3/16"	1/8"	3/16"	1/4"	1/2"	3/4"	1"	1 1/4"	1 1/2"	1 3/4"	2"	2 1/4"	2 1/2"	2 3/4"	3"	3 1/4"	3 1/2"	3 3/4"	4"	4 1/4"	4 1/2"	4 3/4"	5"	5 1/4"	5 1/2"	5 3/4"	6"
lin 7	III	6"	2"	1 1/4"	5/8"	1/2"	3/8"	1/4"	3/16"	1/8"	3/16"	1/4"	1/2"	3/4"	1"	1 1/4"	1 1/2"	1 3/4"	2"	2 1/4"	2 1/2"	2 3/4"	3"	3 1/4"	3 1/2"	3 3/4"	4"	4 1/4"	4 1/2"	4 3/4"	5"	5 1/4"	5 1/2"	5 3/4"	6"
lin 7 1/2	III	6"	2"	1 1/4"	5/8"	1/2"	3/8"	1/4"	3/16"	1/8"	3/16"	1/4"	1/2"	3/4"	1"	1 1/4"	1 1/2"	1 3/4"	2"	2 1/4"	2 1/2"	2 3/4"	3"	3 1/4"	3 1/2"	3 3/4"	4"	4 1/4"	4 1/2"	4 3/4"	5"	5 1/4"	5 1/2"	5 3/4"	6"
lin 7 1/4	IV	6"	2"	1 1/4"	5/8"	1/2"	3/8"	1/4"	3/16"	1/8"	3/16"	1/4"	1/2"	3/4"	1"	1 1/4"	1 1/2"	1 3/4"	2"	2 1/4"	2 1/2"	2 3/4"	3"	3 1/4"	3 1/2"	3 3/4"	4"	4 1/4"	4 1/2"	4 3/4"	5"	5 1/4"	5 1/2"	5 3/4"	6"
lin 8	III	6"	2"	1 1/4"	5/8"	1/2"	3/8"	1/4"	3/16"	1/8"	3/16"	1/4"	1/2"	3/4"	1"	1 1/4"	1 1/2"	1 3/4"	2"	2 1/4"	2 1/2"	2 3/4"	3"	3 1/4"	3 1/2"	3 3/4"	4"	4 1/4"	4 1/2"	4 3/4"	5"	5 1/4"	5 1/2"	5 3/4"	6"
lin 8 1/2	IV	6"	2"	1 1/4"	5/8"	1/2"	3/8"	1/4"	3/16"	1/8"	3/16"	1/4"	1/2"	3/4"	1"	1 1/4"	1 1/2"	1 3/4"	2"	2 1/4"	2 1/2"	2 3/4"	3"	3 1/4"	3 1/2"	3 3/4"	4"	4 1/4"	4 1/2"	4 3/4"	5"	5 1/4"	5 1/2"	5 3/4"	6"
lin 8 1/4	IV	6"	2"	1 1/4"	5/8"	1/2"	3/8"	1/4"	3/16"	1/8"	3/16"	1/4"	1/2"	3/4"	1"	1 1/4"	1 1/2"	1 3/4"	2"	2 1/4"	2 1/2"	2 3/4"	3"	3 1/4"	3 1/2"	3 3/4"	4"	4 1/4"	4 1/2"	4 3/4"	5"	5 1/4"	5 1/2"	5 3/4"	6"
lin 9	IV	6"	2"	1 1/4"	5/8"	1/2"	3/8"	1/4"	3/16"	1/8"	3/16"	1/4"	1/2"	3/4"	1"	1 1/4"	1 1/2"	1 3/4"	2"	2 1/4"	2 1/2"	2 3/4"	3"	3 1/4"	3 1/2"	3 3/4"	4"	4 1/4"	4 1/2"	4 3/4"	5"	5 1/4"	5 1/2"	5 3/4"	6"
lin 9 1/2	IV	6"	2"	1 1/4"	5/8"	1/2"	3/8"	1/4"	3/16"	1/8"	3/16"	1/4"	1/2"	3/4"	1"	1 1/4"	1 1/2"	1 3/4"	2"	2 1/4"	2 1/2"	2 3/4"	3"	3 1/4"	3 1/2"	3 3/4"	4"	4 1/4"	4 1/2"	4 3/4"	5"	5 1/4"	5 1/2"	5 3/4"	6"
lin 10	IV	6"	2"	1 1/4"	5/8"	1/2"	3/8"	1/4"	3/16"	1/8"	3/16"	1/4"	1/2"	3/4"	1"	1 1/4"	1 1/2"	1 3/4"	2"	2 1/4"	2 1/2"	2 3/4"	3"	3 1/4"	3 1/2"	3 3/4"	4"	4 1/4"	4 1/2"	4 3/4"	5"	5 1/4"	5 1/2"	5 3/4"	6"
lin 10 1/2	II	12"	1 1/2"	1 1/4"	5/8"	1/2"	3/8"	1/4"	3/16"	1/8"	3/16"	1/4"	1/2"	3/4"	1"	1 1/4"	1 1/2"	1 3/4"	2"	2 1/4"	2 1/2"	2 3/4"	3"	3 1/4"	3 1/2"	3 3/4"	4"	4 1/4"	4 1/2"	4 3/4"	5"	5 1/4"	5 1/2"	5 3/4"	6"
lin 11	I	12"	1 1/2"	1 1/4"	5/8"	1/2"	3/8"	1/4"	3/16"	1/8"	3/16"	1/4"	1/2"	3/4"	1"	1 1/4"	1 1/2"	1 3/4"	2"	2 1/4"	2 1/2"	2 3/4"	3"	3 1/4"	3 1/2"	3 3/4"	4"	4 1/4"	4 1/2"	4 3/4"	5"	5 1/4"	5 1/2"	5 3/4"	6"
lin 12	I	12"	1 1/2"	1 1/4"	5/8"	1/2"	3/8"	1/4"	3/16"	1/8"	3/16"	1/4"	1/2"	3/4"	1"	1 1/4"	1 1/2"	1 3/4"	2"	2 1/4"	2 1/2"	2 3/4"	3"	3 1/4"	3 1/2"	3 3/4"	4"	4 1/4"	4 1/2"	4 3/4"	5"	5 1/4"	5 1/2"	5 3/4"	6"
lin 13	I	12"	1 1/2"	1 1/4"	5/8"	1/2"	3/8"	1/4"	3/16"	1/8"	3/16"	1/4"	1/2"	3/4"	1"	1 1/4"	1 1/2"	1 3/4"	2"	2 1/4"	2 1/2"	2 3/4"	3"	3 1/4"	3 1/2"	3 3/4"	4"	4 1/4"	4 1/2"	4 3/4"	5"	5 1/4"	5 1/2"	5 3/4"	6"
lin 14	I	12"	1 1/2"	1 1/4"	5/8"	1/2"	3/8"	1/4"	3/16"	1/8"	3/16"	1/4"	1/2"	3/4"	1"	1 1/4"	1 1/2"	1 3/4"	2"	2 1/4"	2 1/2"	2 3/4"	3"	3 1/4"	3 1/2"	3 3/4"	4"	4 1/4"	4 1/2"	4 3/4"	5"	5 1/4"	5 1/2"	5 3/4"	6"
lin 15	I	12"	1 1/2"	1 1/4"	5/8"	1/2"	3/8"	1/4"	3/16"	1/8"	3/16"	1/4"	1/2"	3/4"	1"	1 1/4"	1 1/2"	1 3/4"	2"	2 1/4"	2 1/2"	2 3/4"	3"	3 1/4"	3 1/2"	3 3/4"	4"	4 1/4"	4 1/2"	4 3/4"	5"	5 1/4"	5 1/2"	5 3/4"	6"
lin 16	IV	6"	2"	1 1/4"	5/8"	1/2"	3/8"	1/4"	3/16"	1/8"	3/16"	1/4"	1/2"	3/4"	1"	1 1/4"	1 1/2"	1 3/4"	2"	2 1/4"	2 1/2"	2 3/4"	3"	3 1/4"	3 1/2"	3 3/4"	4"	4 1/4"	4 1/2"	4 3/4"	5"	5 1/4"	5 1/2"	5 3/4"	6"
lin 17	IV	6"	2"	1 1/4"	5/8"	1/2"	3/8"	1/4"	3/16"	1/8"	3/16"	1/4"	1/2"	3/4"	1"	1 1/4"	1 1/2"	1 3/4"	2"	2 1/4"	2 1/2"	2 3/4"	3"	3 1/4"	3 1/2"	3 3/4"	4"	4 1/4"	4 1/2"	4 3/4"	5"	5 1/4"	5 1/2"	5 3/4"	6"
lin 18	IV	6"	2"	1 1/4"	5/8"	1/2"	3/8"	1/4"	3/16"	1/8"	3/16"	1/4"	1/2"	3/4"	1"	1 1/4"	1 1/2"	1 3/4"	2"	2 1/4"	2 1/2"	2 3/4"	3"	3 1/4"	3 1/2"	3 3/4"	4"	4 1/4"	4 1/2"	4 3/4"	5"	5 1/4"	5 1/2"	5 3/4"	6"
lin 19	IV	6"	2"	1 1/4"	5/8"	1/2"	3/8"	1/4"	3/16"	1/8"	3/16"	1/4"	1/2"	3/4"	1"	1 1/4"	1 1/2"	1 3/4"	2"	2 1/4"	2 1/2"	2 3/4"	3"	3 1/4"	3 1/2"	3 3/4"	4"	4 1/4"	4 1/2"	4 3/4"	5"	5 1/4"	5 1/2"	5 3/4"	6"
lin 20	IV	6"	2"	1 1/4"	5/8"	1/2"	3/8"	1/4"	3/16"	1/8"	3/16"	1/4"	1/2"	3/4"	1"	1 1/4"	1 1/2"	1 3/4"	2"	2 1/4"	2 1/2"	2 3/4"	3"	3 1/4"	3 1/2"	3 3/4"	4"	4 1/4"	4 1/2"	4 3/4"	5"	5 1/4"	5 1/2"	5 3/4"	6"
lin 21	IV	6"	2"	1 1/4"	5/8"	1/2"	3/8"	1/4"	3/16"	1/8"	3/16"	1/4"	1/2"	3/4"	1"	1 1/4"	1 1/2"	1 3/4"	2"	2 1/4"	2 1/2"	2 3/4"	3"	3 1/4"	3 1/2"	3 3/4"	4"	4 1/4"	4 1/2"	4 3/4"	5"	5 1/4"	5 1/2"	5 3/4"	6"