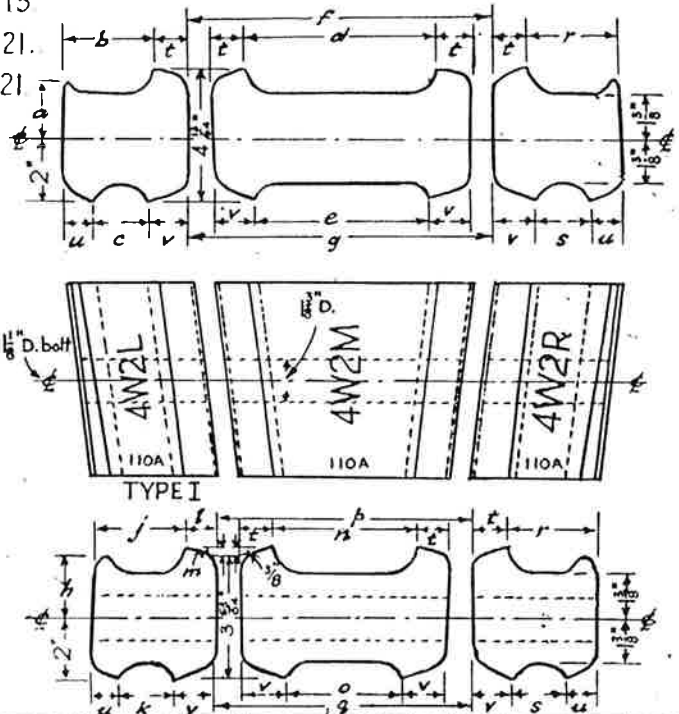
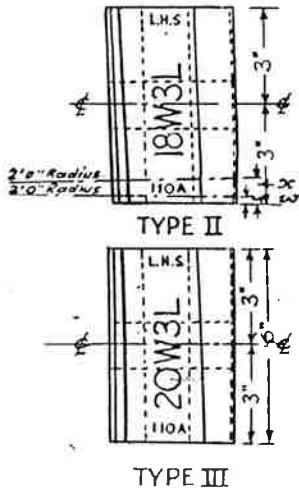


PERMANENT WAY NOTES

B.R.109FB. & B.S.110AFB. COMMON XING BLOCK OUTER WING BLOCKS. (1)

THESE NOTES ARE INTENDED FOR THE GUIDANCE AND ASSISTANCE OF STAFF ENGAGED UPON PERMANENT WAY WORK. THEY DO NOT IN ANY WAY MODIFY, SUPPLEMENT OR AMEND THE INSTRUCTIONS LAID DOWN IN E.D.I., STANDARD DRAWINGS CIRCULARS ETC., WHICH SHOULD BE REFERRED TO IN ALL CASES.

W2L&R for crossings 1 in 4 to 1 in 15
 W3L&R " " 1 in 16 to 1 in 21.
 The W2L&R blocks for 1 in 16 to 1 in 21 are Inner Wing Blocks.



* The overall bottom width of the middle block is obtained from (q - 1 1/2").

CROSSING ANGLE	TYPE OF LH BLOCK	a	b	c	d	e	f	g	h	i	j	k	l	m	n	o	p	q	r	s	t	u	v	w	x	LENGTH OF BOLT
1 in 4	I	1 25/32	2 3/4	1 3/4	5 1/4	5 3/32			1 25/32	2 5/8	1 3/4	1 1/8	3/8	4 1/2	3 3/32			2 3/4	1 3/4	1 1/8	1 3/32	1 1/32				1'-10"
1 in 4 1/2	I	1 25/32	2 7/8	1 13/16	5 1/4	4 3/4			1 25/32	2 7/8	1 13/16	1 1/4	3/8	3 1/4	3 1/4			2 3/8	1 13/16	1 3/4	1 7/32	1 1/32				1'-9 1/2"
1 in 4 1/4	I	1 25/32	2 7/8	1 3/4	4 1/4	3 5/8			1 25/32	2 7/8	1 3/4	1 1/4	3/8	3 1/2	2 1/2			2 3/4	1 13/16	1 3/4	1 1/4	1 1/32				1'-9"
1 in 4 1/8	I	1 25/32	2 7/8	1 13/16	4 5/8	3 1/2			1 25/32	2 7/8	1 13/16	1 1/4	3/8	2 1/4	2 1/4			2 3/4	1 13/16	1 3/4	1 1/4	1 1/32				1'-8 1/2"
1 in 5	I	1 25/32	2 5/8	1 1/2	3 3/4	3 1/16			1 25/32	2 5/8	1 1/2	1 1/4	3/8	2 1/4	1 5/8			2 1/4	1 1/2	1 3/4	1 1/4	1 1/32				1'-9"
1 in 5 1/2	I	1 25/32	2 5/8	1 13/16	3 1/4	2 1/4			1 25/32	2 5/8	1 13/16	1 1/4	3/8	2 1/2	1 1/2			2 1/4	1 13/16	1 3/4	1 1/4	1 1/32				1'-9"
1 in 5 1/4	I	1 25/32	2 5/8	1 1/2	2 5/8	2 1/4			1 25/32	2 5/8	1 1/2	1 1/4	3/8	1 5/8	1 1/4			2 1/4	1 13/16	1 3/4	1 1/4	1 1/32				1'-8 1/2"
1 in 5 1/8	I	1 25/32	2 5/8	1 13/16	2 7/8	1 5/8			1 25/32	2 5/8	1 13/16	1 1/4	3/8	1 5/8	5/8			2 1/4	1 13/16	1 3/4	1 1/4	1 1/32				1'-8"
1 in 6	I	1 25/32	2 1/4	1 13/16	2 1/4	1 3/4			1 25/32	2 1/4	1 13/16	1 1/4	3/8	1 1/4	3/4			2 1/4	1 13/16	1 3/4	1 1/4	1 1/32				1'-7 1/2"
1 in 6 1/2	I	1 25/32	2 1/4	1 13/16	1 3/4	1 3/4			1 25/32	2 1/4	1 13/16	1 1/4	3/8	1 1/4	3/8			2 1/4	1 13/16	1 3/4	1 1/4	1 1/32				1'-7 1/2"
1 in 6 1/4	I	1 25/32	2 1/4	1 13/16	1 3/4	1 3/4			1 25/32	2 1/4	1 13/16	1 1/4	3/8	1 1/4	3/8			2 1/4	1 13/16	1 3/4	1 1/4	1 1/32				1'-7"
1 in 6 3/4	I	1 25/32	2 1/4	1 13/16	1 3/4	1 3/4			1 25/32	2 1/4	1 13/16	1 1/4	3/8	1 1/4	3/8			2 1/4	1 13/16	1 3/4	1 1/4	1 1/32				1'-7"
1 in 7	I	1 25/32	2 1/4	1 13/16	1 3/4	1 3/4			1 25/32	2 1/4	1 13/16	1 1/4	3/8	1 1/4	3/8			2 1/4	1 13/16	1 3/4	1 1/4	1 1/32				1'-7"
1 in 7 1/2	I	1 25/32	2 1/4	1 13/16	1 3/4	1 3/4			1 25/32	2 1/4	1 13/16	1 1/4	3/8	1 1/4	3/8			2 1/4	1 13/16	1 3/4	1 1/4	1 1/32				1'-6 1/2"
1 in 7 1/4	I	1 25/32	2 1/4	1 13/16	1 3/4	1 3/4			1 25/32	2 1/4	1 13/16	1 1/4	3/8	1 1/4	3/8			2 1/4	1 13/16	1 3/4	1 1/4	1 1/32				1'-6 1/2"
1 in 8	I	1 25/32	2 1/4	1 13/16	1 3/4	1 3/4			1 25/32	2 1/4	1 13/16	1 1/4	3/8	1 1/4	3/8			2 1/4	1 13/16	1 3/4	1 1/4	1 1/32				1'-6"
1 in 8 1/2	I	1 25/32	2 1/4	1 13/16	1 3/4	1 3/4			1 25/32	2 1/4	1 13/16	1 1/4	3/8	1 1/4	3/8			2 1/4	1 13/16	1 3/4	1 1/4	1 1/32				1'-6"
1 in 8 1/4	I	1 25/32	2 1/4	1 13/16	1 3/4	1 3/4			1 25/32	2 1/4	1 13/16	1 1/4	3/8	1 1/4	3/8			2 1/4	1 13/16	1 3/4	1 1/4	1 1/32				1'-6"
1 in 9	I	1 25/32	2 1/4	1 13/16	1 3/4	1 3/4			1 25/32	2 1/4	1 13/16	1 1/4	3/8	1 1/4	3/8			2 1/4	1 13/16	1 3/4	1 1/4	1 1/32				1'-5 1/2"
1 in 9 1/2	I	1 25/32	2 1/4	1 13/16	1 3/4	1 3/4			1 25/32	2 1/4	1 13/16	1 1/4	3/8	1 1/4	3/8			2 1/4	1 13/16	1 3/4	1 1/4	1 1/32				1'-5 1/2"
1 in 10	II	1 25/32	2 1/4	1 13/16	1 3/4	1 3/4			1 25/32	2 1/4	1 13/16	1 1/4	3/8	1 1/4	3/8			2 1/4	1 13/16	1 3/4	1 1/4	1 1/32			1/8	1'-5"
1 in 10 1/2	I	1 11/16	2 1/4	1 13/16	1 3/4	1 3/4			1 11/16	2 1/4	1 13/16	1 1/4	3/8	1 1/4	3/8			2 1/4	1 13/16	1 3/4	1 1/4	1 1/32				1'-8"
1 in 11	I	1 11/16	2 1/4	1 13/16	1 3/4	1 3/4			1 11/16	2 1/4	1 13/16	1 1/4	3/8	1 1/4	3/8			2 1/4	1 13/16	1 3/4	1 1/4	1 1/32				1'-7 1/2"
1 in 12	I	1 11/16	2 1/4	1 13/16	1 3/4	1 3/4			1 11/16	2 1/4	1 13/16	1 1/4	3/8	1 1/4	3/8			2 1/4	1 13/16	1 3/4	1 1/4	1 1/32				1'-7"
1 in 13	I	1 11/16	2 1/4	1 13/16	1 3/4	1 3/4			1 11/16	2 1/4	1 13/16	1 1/4	3/8	1 1/4	3/8			2 1/4	1 13/16	1 3/4	1 1/4	1 1/32				1'-6 1/2"
1 in 14	I	1 11/16	2 1/4	1 13/16	1 3/4	1 3/4			1 11/16	2 1/4	1 13/16	1 1/4	3/8	1 1/4	3/8			2 1/4	1 13/16	1 3/4	1 1/4	1 1/32				1'-6"
1 in 15	I	1 11/16	2 1/4	1 13/16	1 3/4	1 3/4			1 11/16	2 1/4	1 13/16	1 1/4	3/8	1 1/4	3/8			2 1/4	1 13/16	1 3/4	1 1/4	1 1/32				1'-6"
1 in 16	I	1 11/16	2 1/4	1 13/16	1 3/4	1 3/4			1 11/16	2 1/4	1 13/16	1 1/4	3/8	1 1/4	3/8			2 1/4	1 13/16	1 3/4	1 1/4	1 1/32				1'-5 1/2"
1 in 17	I	1 11/16	2 1/4	1 13/16	1 3/4	1 3/4			1 11/16	2 1/4	1 13/16	1 1/4	3/8	1 1/4	3/8			2 1/4	1 13/16	1 3/4	1 1/4	1 1/32				1'-5 1/2"
1 in 18	II	1 11/16	2 1/4	1 13/16	1 3/4	1 3/4			1 11/16	2 1/4	1 13/16	1 1/4	3/8	1 1/4	3/8			2 1/4	1 13/16	1 3/4	1 1/4	1 1/32		1/4	5/8	1'-5"
1 in 20	III	1 11/16	2 1/4	1 13/16	1 3/4	1 3/4			1 11/16	2 1/4	1 13/16	1 1/4	3/8	1 1/4	3/8			2 1/4	1 13/16	1 3/4	1 1/4	1 1/32				1'-5 1/2"
1 in 21	III	1 11/16	2 1/4	1 13/16	1 3/4	1 3/4			1 11/16	2 1/4	1 13/16	1 1/4	3/8	1 1/4	3/8			2 1/4	1 13/16	1 3/4	1 1/4	1 1/32				1'-5 1/2"