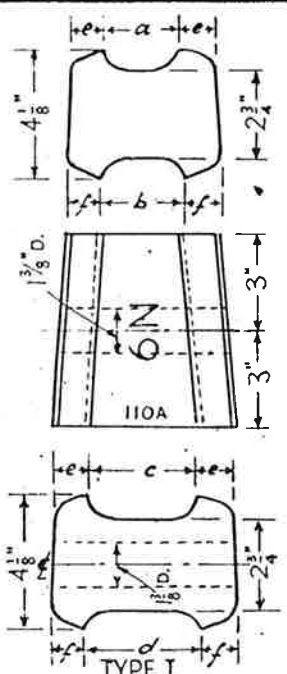


PERMANENT WAY NOTES

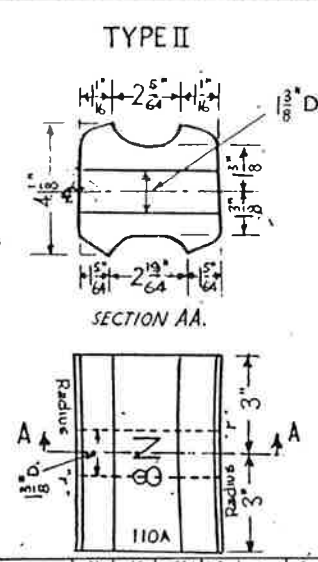
B.R.109 FB & B.S.110 FB

COMMON XING BLOCK NOSE & NECK BLOCKS

THESE NOTES ARE INTENDED FOR THE GUIDANCE AND ASSISTANCE OF STAFF ENGAGED UPON PERMANENT WAY WORK. THEY DO NOT IN ANY WAY MODIFY, SUPPLEMENT OR AMEND THE INSTRUCTIONS LAID DOWN IN E.D.I. STANDARD DRAWINGS CIRCULARS ETC., WHICH SHOULD BE REFERRED TO IN ALL CASES.

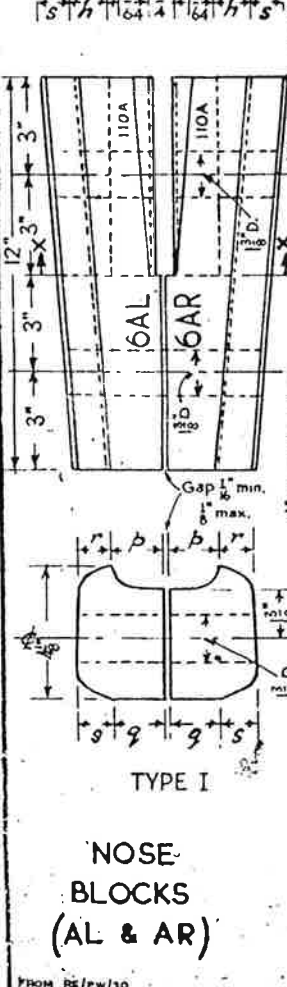
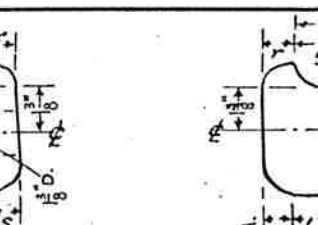
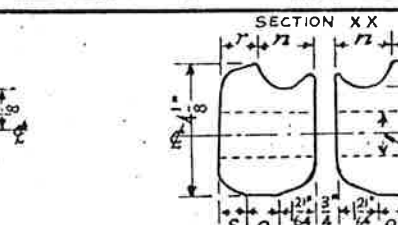
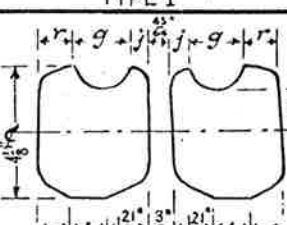


CROSSING ANGLE	NARROW END		WIDE END		LENGTH OF BOLT	
	a	b	c	d	e	f
1 in 4	2 3/4	2 3/4	4 3/4	4 3/4	1 3/4	1 3/4
1 in 4 1/2	2 3/4	2 3/4	3 3/4	4 3/4	1 3/4	1 3/4
1 in 4 3/4	2 3/4	2 3/4	3 3/4	4 3/4	1 3/4	1 3/4
1 in 4 3/8	2 3/4	2 3/4	3 3/4	3 3/4	1 3/4	1 3/4
1 in 5	2 3/4	2 3/4	3 3/4	3 3/4	1 3/4	1 3/4
1 in 5 1/2	2 3/4	2 3/4	3 3/4	3 3/4	1 3/4	1 3/4
1 in 5 3/4	2 3/4	2 3/4	3 3/4	3 3/4	1 3/4	1 3/4
1 in 6	2 3/4	2 3/4	3 3/4	3 3/4	1 3/4	1 3/4
1 in 6 1/2	2 3/4	2 3/4	3 3/4	3 3/4	1 3/4	1 3/4
1 in 6 3/4	2 3/4	2 3/4	3 3/4	3 3/4	1 3/4	1 3/4
1 in 7	2 3/4	2 3/4	3 3/4	3 3/4	1 3/4	1 3/4
1 in 7 1/2	2 3/4	2 3/4	3 3/4	3 3/4	1 3/4	1 3/4
1 in 7 3/4	2 3/4	2 3/4	3 3/4	3 3/4	1 3/4	1 3/4
1 in 8	2 3/4	2 3/4	3 3/4	3 3/4	1 3/4	1 3/4
1 in 8 1/2	2 3/4	2 3/4	3 3/4	3 3/4	1 3/4	1 3/4
1 in 8 3/4	2 3/4	2 3/4	3 3/4	3 3/4	1 3/4	1 3/4
1 in 9	2 3/4	2 3/4	3 3/4	3 3/4	1 3/4	1 3/4
1 in 10	2 3/4	2 3/4	3 3/4	3 3/4	1 3/4	1 3/4
1 in 10 1/2	2 3/4	2 3/4	3 3/4	3 3/4	1 3/4	1 3/4
1 in 10 3/4	2 3/4	2 3/4	3 3/4	3 3/4	1 3/4	1 3/4
1 in 11	2 3/4	2 3/4	3 3/4	3 3/4	1 3/4	1 3/4
1 in 12	2 3/4	2 3/4	3 3/4	3 3/4	1 3/4	1 3/4
1 in 13	2 3/4	2 3/4	3 3/4	3 3/4	1 3/4	1 3/4
1 in 14	2 3/4	2 3/4	3 3/4	3 3/4	1 3/4	1 3/4
1 in 15	2 3/4	2 3/4	3 3/4	3 3/4	1 3/4	1 3/4
1 in 16	2 3/4	2 3/4	3 3/4	3 3/4	1 3/4	1 3/4
1 in 17	2 3/4	2 3/4	3 3/4	3 3/4	1 3/4	1 3/4
1 in 18	2 3/4	2 3/4	3 3/4	3 3/4	1 3/4	1 3/4
1 in 20	2 3/4	2 3/4	3 3/4	3 3/4	1 3/4	1 3/4
1 in 21	2 3/4	2 3/4	3 3/4	3 3/4	1 3/4	1 3/4

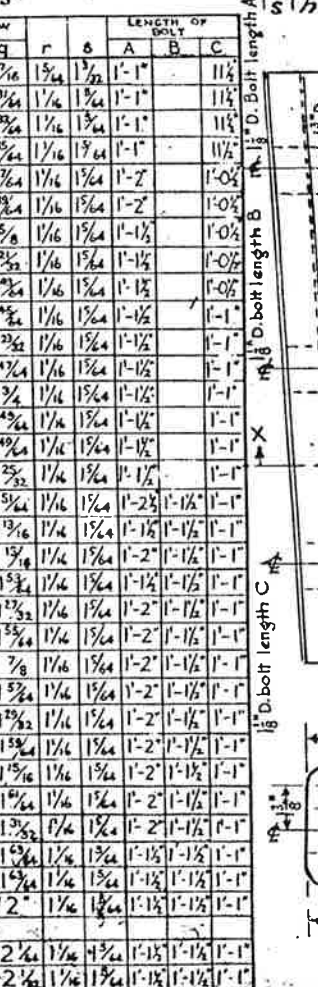


CROSSING	Radius "r"	LENGTH OF BOLT
1 in 7	3'-11"	11"
1 in 7 1/4	4'-3"	11"
1 in 7 1/2	4'-6 1/2"	11"
1 in 7 3/4	4'-10"	11"
1 in 8	5'-2"	11"
1 in 8 1/4	5'-6 1/2"	11"
1 in 8 1/2	5'-10 1/2"	11"
1 in 8 3/4	6'-2 1/2"	11"
1 in 9	6'-7"	11"

NECK BLOCKS (N)



CROSSING ANGLE	TYPE	WIDE END		SECTION XX		NARROW END		LENGTH OF BOLT					
		g	h	k/m	n	o	p	q	r	s	A	B	C
4	I	1 1/2	1 3/4	3 3/4	3 3/4	1 3/4	1 3/4	1 3/4	1 3/4	1 3/4	1 3/4	1 3/4	1 3/4
4 1/4	I	1 1/2	1 3/4	3 3/4	3 3/4	1 3/4	1 3/4	1 3/4	1 3/4	1 3/4	1 3/4	1 3/4	1 3/4
4 1/2	I	1 1/2	1 3/4	3 3/4	3 3/4	1 3/4	1 3/4	1 3/4	1 3/4	1 3/4	1 3/4	1 3/4	1 3/4
4 3/4	I	1 1/2	1 3/4	3 3/4	3 3/4	1 3/4	1 3/4	1 3/4	1 3/4	1 3/4	1 3/4	1 3/4	1 3/4
5	I	1 1/2	1 3/4	3 3/4	3 3/4	1 3/4	1 3/4	1 3/4	1 3/4	1 3/4	1 3/4	1 3/4	1 3/4
5 1/2	I	1 1/2	1 3/4	3 3/4	3 3/4	1 3/4	1 3/4	1 3/4	1 3/4	1 3/4	1 3/4	1 3/4	1 3/4
5 3/4	I	1 1/2	1 3/4	3 3/4	3 3/4	1 3/4	1 3/4	1 3/4	1 3/4	1 3/4	1 3/4	1 3/4	1 3/4
6	I	1 1/2	1 3/4	3 3/4	3 3/4	1 3/4	1 3/4	1 3/4	1 3/4	1 3/4	1 3/4	1 3/4	1 3/4
6 1/4	I	1 1/2	1 3/4	3 3/4	3 3/4	1 3/4	1 3/4	1 3/4	1 3/4	1 3/4	1 3/4	1 3/4	1 3/4
6 1/2	I	1 1/2	1 3/4	3 3/4	3 3/4	1 3/4	1 3/4	1 3/4	1 3/4	1 3/4	1 3/4	1 3/4	1 3/4
6 3/4	I	1 1/2	1 3/4	3 3/4	3 3/4	1 3/4	1 3/4	1 3/4	1 3/4	1 3/4	1 3/4	1 3/4	1 3/4
7	I	1 1/2	1 3/4	3 3/4	3 3/4	1 3/4	1 3/4	1 3/4	1 3/4	1 3/4	1 3/4	1 3/4	1 3/4
7 1/4	I	1 1/2	1 3/4	3 3/4	3 3/4	1 3/4	1 3/4	1 3/4	1 3/4	1 3/4	1 3/4	1 3/4	1 3/4
7 1/2	I	1 1/2	1 3/4	3 3/4	3 3/4	1 3/4	1 3/4	1 3/4	1 3/4	1 3/4	1 3/4	1 3/4	1 3/4
7 3/4	I	1 1/2	1 3/4	3 3/4	3 3/4	1 3/4	1 3/4	1 3/4	1 3/4	1 3/4	1 3/4	1 3/4	1 3/4
8	II	1 1/2	1 3/4	3 3/4	3 3/4	1 3/4	1 3/4	1 3/4	1 3/4	1 3/4	1 3/4	1 3/4	1 3/4
8 1/4	II	1 1/2	1 3/4	3 3/4	3 3/4	1 3/4	1 3/4	1 3/4	1 3/4	1 3/4	1 3/4	1 3/4	1 3/4
8 1/2	II	1 1/2	1 3/4	3 3/4	3 3/4	1 3/4	1 3/4	1 3/4	1 3/4	1 3/4	1 3/4	1 3/4	1 3/4
8 3/4	II	1 1/2	1 3/4	3 3/4	3 3/4	1 3/4	1 3/4	1 3/4	1 3/4	1 3/4	1 3/4	1 3/4	1 3/4
9	II	1 1/2	1 3/4	3 3/4	3 3/4	1 3/4	1 3/4	1 3/4	1 3/4	1 3/4	1 3/4	1 3/4	1 3/4
9 1/2	II	1 1/2	1 3/4	3 3/4	3 3/4	1 3/4	1 3/4	1 3/4	1 3/4	1 3/4	1 3/4	1 3/4	1 3/4
10	II	1 1/2	1 3/4	3 3/4	3 3/4	1 3/4	1 3/4	1 3/4	1 3/4	1 3/4	1 3/4	1 3/4	1 3/4
10 1/2	II	1 1/2	1 3/4	3 3/4	3 3/4	1 3/4	1 3/4	1 3/4	1 3/4	1 3/4	1 3/4	1 3/4	1 3/4
11	II	1 1/2	1 3/4	3 3/4	3 3/4	1 3/4	1 3/4	1 3/4	1 3/4	1 3/4	1 3/4	1 3/4	1 3/4
12	II	1 1/2	1 3/4	3 3/4	3 3/4	1 3/4	1 3/4	1 3/4	1 3/4	1 3/4	1 3/4	1 3/4	1 3/4
13	II	1 1/2	1 3/4	3 3/4	3 3/4	1 3/4	1 3/4	1 3/4	1 3/4	1 3/4	1 3/4	1 3/4	1 3/4
14	II	1 1/2	1 3/4	3 3/4	3 3/4	1 3/4	1 3/4	1 3/4	1 3/4	1 3/4	1 3/4	1 3/4	1 3/4
15	II	1 1/2	1 3/4	3 3/4	3 3/4	1 3/4	1 3/4	1 3/4	1 3/4	1 3/4	1 3/4	1 3/4	1 3/4
16	II	1 1/2	1 3/4	3 3/4	3 3/4	1 3/4	1 3/4	1 3/4	1 3/4	1 3/4	1 3/4	1 3/4	1 3/4
17	II	1 1/2	1 3/4	3 3/4	3 3/4	1 3/4	1 3/4	1 3/4	1 3/4	1 3/4	1 3/4	1 3/4	1 3/4
18	II	1 1/2	1 3/4	3 3/4	3 3/4	1 3/4	1 3/4	1 3/4	1 3/4	1 3/4	1 3/4	1 3/4	1 3/4
20	II	1 1/2	1 3/4	3 3/4	3 3/4	1 3/4	1 3/4	1 3/4	1 3/4	1 3/4	1 3/4	1 3/4	1 3/4
21	II	1 1/2	1 3/4	3 3/4	3 3/4	1 3/4	1 3/4	1 3/4	1 3/4	1 3/4	1 3/4	1 3/4	1 3/4



CROSSING	Radius "r"	LENGTH OF BOLT
1 in 7	3'-11"	11"
1 in 7 1/4	4'-3"	11"
1 in 7 1/2	4'-6 1/2"	11"
1 in 7 3/4	4'-10"	11"
1 in 8	5'-2"	11"
1 in 8 1/4	5'-6 1/2"	11"
1 in 8 1/2	5'-10 1/2"	11"
1 in 8 3/4	6'-2 1/2"	11"
1 in 9	6'-7"	11"

TYPE II