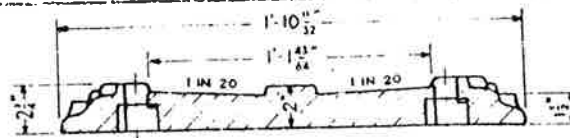


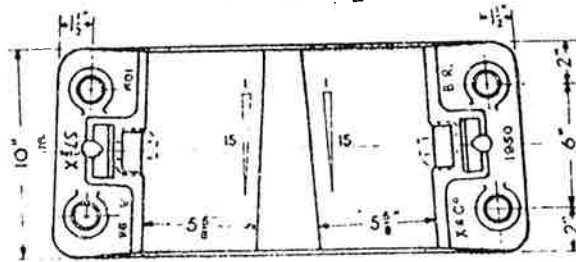
PERMANENT WAY  
NOTES

B.R. 109 FB & B.S. 110A FB.  
BASEPLATES FOR SLIPS (I)

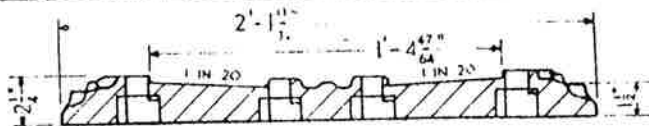
THESE NOTES ARE INTENDED FOR THE GUIDANCE AND ASSISTANCE OF STAFF ENGAGED UPON PERMANENT WAY WORK. THEY DO NOT IN ANY WAY MODIFY, SUPPLEMENT OR AMEND THE INSTRUCTIONS LAID DOWN IN E.D.I. STANDARD DRAWINGS, CIRCULARS ETC., WHICH SHOULD BE REFERRED TO IN ALL CASES.



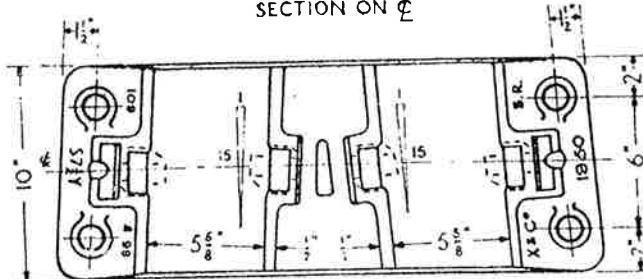
SECTION ON  $\phi$



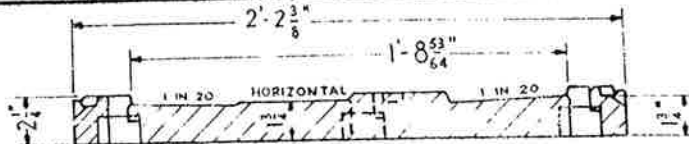
S7  $\frac{1}{2}$  X



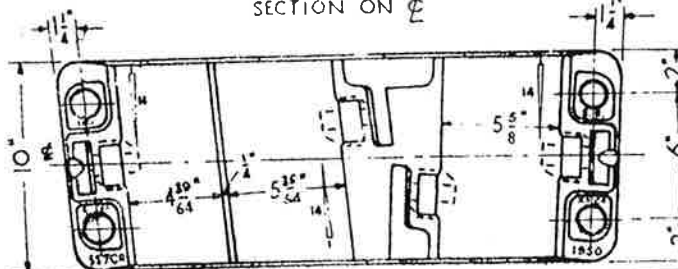
SECTION ON  $\phi$



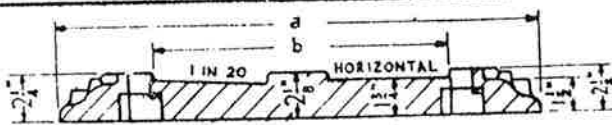
S7  $\frac{1}{2}$  Y



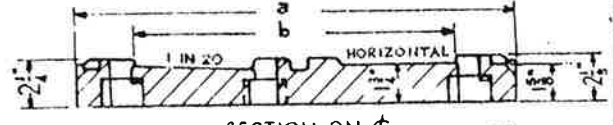
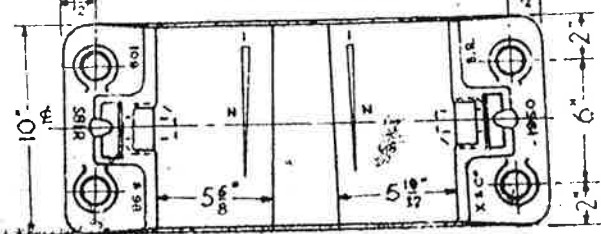
SECTION ON  $\phi$



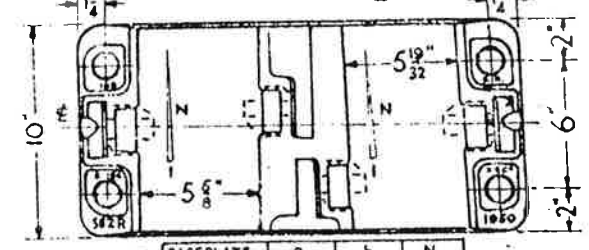
SS7 CR



SECTION ON  $\phi$



SECTION ON  $\phi$



S-IR  
SUPERSEDED BY  
S7, 7Y, 8YR & S7TR

BASEPLATES	a	b	N
109 & 98 S7R	1'-7 1/8"	1'-1"	40
S7IR	1'-10 1/2"	1'-2 1/8"	40
S8IR	1'-10 1/2"	1'-2 1/4"	42

Illustrations and dimensions are for R.H. BASEPLATES - L.H. BASEPLATES & e.g. S-2L will be mirror reflections of the R.H. ones.

BASEPLATE	a	b	N
109 & 98 S7R	1'-7 1/8"	1'-2 1/8"	37
S7R	1'-9 3/4"	1'-3 3/8"	37
S8R	1'-8 1/2"	1'-3 3/4"	39
110A S7R	1'-9 1/4"	1'-3 3/8"	37
S82R	1'-8 1/4"	1'-3 3/4"	39

S-2R