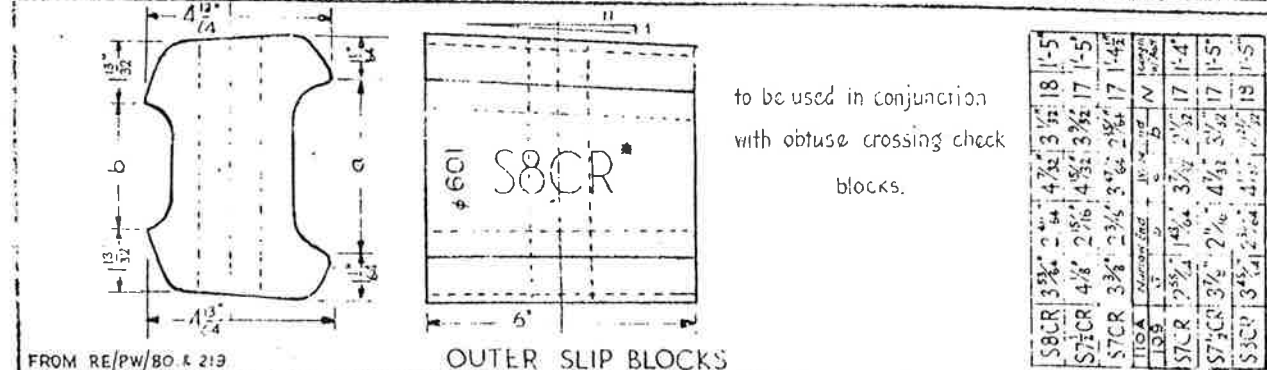
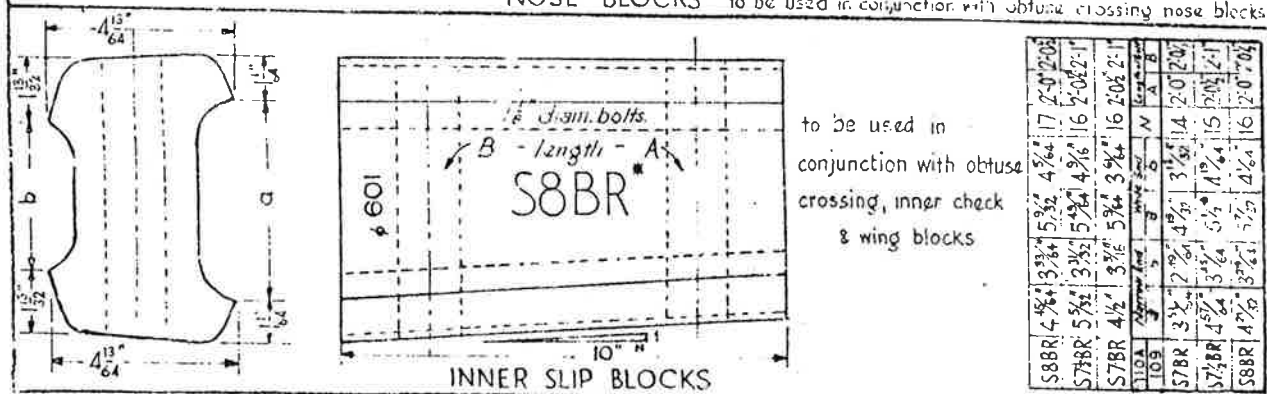
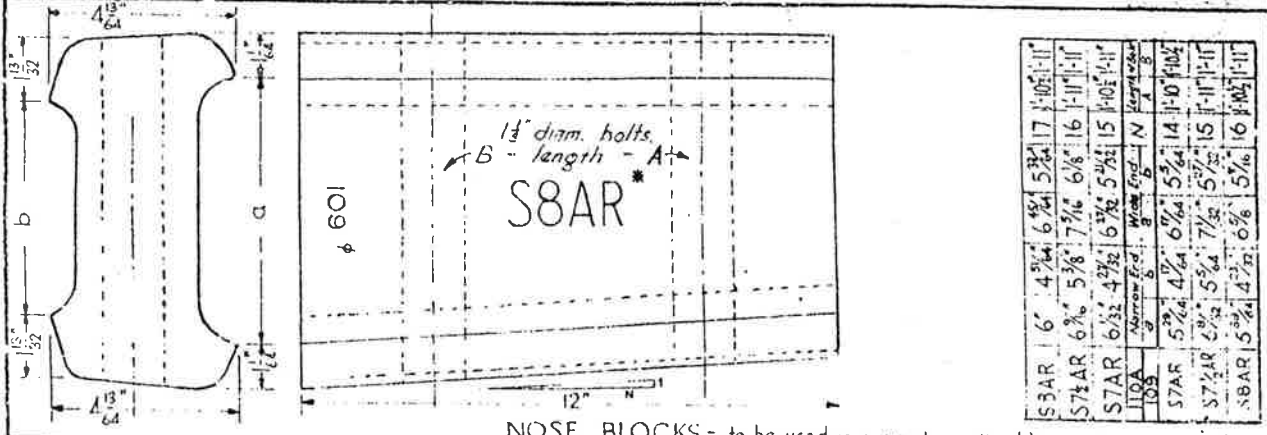
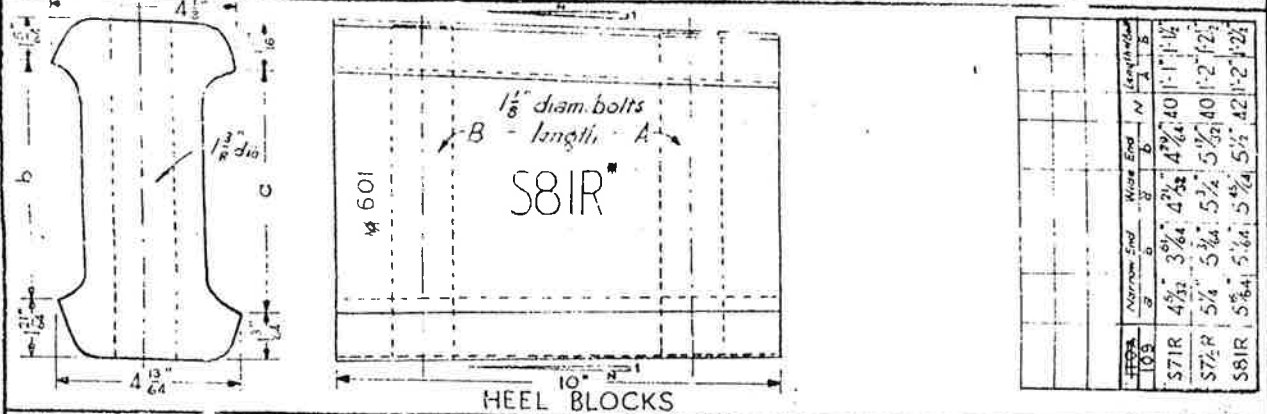
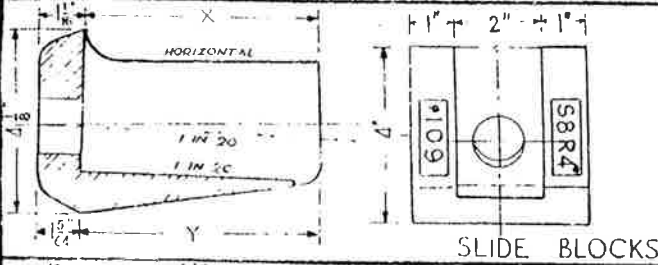


PERMANENT WAY NOTES

BR.109 FB. & B.S.110A FB. C.I. BLOCKS FOR SLIPS.

THESE NOTES ARE INTENDED FOR THE GUIDANCE AND ASSISTANCE OF STAFF ENGAGED UPON PERMANENT WAY WORK. THEY DO NOT IN ANY WAY MODIFY, SUPPLEMENT OR AMEND THE INSTRUCTIONS LAID DOWN IN E.D.I. STANDARD DRAWINGS CIRCULARS ETC., WHICH SHOULD BE REFERRED TO IN ALL CASES.



FROM RE/PW/80 & 219

Although only R.H. patterns are illustrated the dimensions as listed apply equally to L.H. blocks