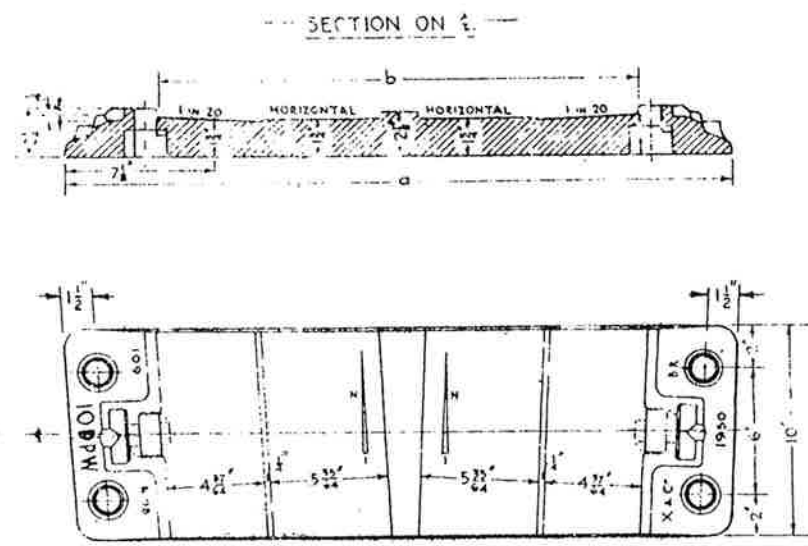


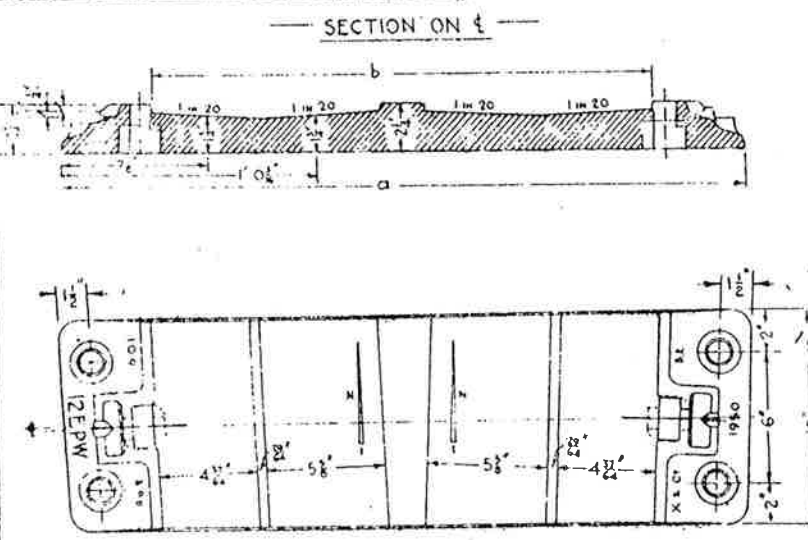
PERMANENT WAY NOTES

FBI091b. COMMON CROSSING BASEPLATES TO TAKE PARALLEL WING RAILS. ①

THESE NOTES ARE INTENDED FOR THE GUIDANCE AND ASSISTANCE OF STAFF ENGAGED UPON PERMANENT WAY WORK. THEY DO NOT IN ANY WAY MODIFY, SUPPLEMENT OR AMEND THE INSTRUCTIONS LAID DOWN IN E.D.I., STANDARD DRAWINGS CIRCULARS ETC., WHICH SHOULD BE REFERRED TO IN ALL CASES.



BASEPLATE 109 & 98	a	b	N	INTERNAL ARRANGEMENT
6CPW	2' 8 1/2"	1' 11 3/4"	12	TYPE III
61CPW	2' 7 3/4"	1' 11 3/4"	13	IV
7CPW	2' 7 3/4"	1' 10 3/4"	14	IV
71CPW	2' 6 1/2"	1' 9 3/4"	15	IV
8CPW	2' 5 3/4"	1' 9 3/4"	16	NO SHOULDER
81CPW	2' 5 3/4"	1' 8 3/4"	17	
9CPW	2' 4 3/4"	1' 8 3/4"	18	
91CPW	2' 4 3/4"	1' 7 3/4"	19	
91DPW	2' 7 3/4"	1' 11 3/4"	19	TYPE IV
10CPW	2' 4 3/4"	1' 7 3/4"	20	NO SHOULDER
10DPW	2' 7 3/4"	1' 10 3/4"	20	TYPE IV
101DPW	2' 6 3/4"	1' 10 3/4"	21	IV
11DPW	2' 6 3/4"	1' 9 3/4"	22	IV
12DPW	2' 5 3/4"	1' 8 3/4"	24	NO SHOULDER
13DPW	2' 5 3/4"	1' 8 3/4"	26	
14DPW	2' 4 3/4"	1' 7 3/4"	28	
14EPW	2' 6 3/4"	1' 9 3/4"	28	TYPE IV
16DPW	2' 3 3/4"	1' 6 3/4"	32	NO SHOULDER
16EPW	2' 5 3/4"	1' 8 3/4"	32	TYPE IV
18DPW	2' 2 3/4"	1' 6 3/4"	36	NO SHOULDER
18EPW	2' 4 3/4"	1' 7 3/4"	36	
18FPW	2' 6 3/4"	1' 9 3/4"	36	TYPE IV
20DPW	2' 2 3/4"	1' 5 3/4"	40	NO SHOULDER
20EPW	2' 5 3/4"	1' 8 3/4"	40	
20FPW	2' 5 3/4"	1' 8 3/4"	40	

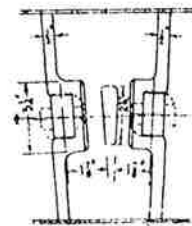


BASEPLATE 109 & 98	a	b	N	INTERNAL ARRANGEMENT
41CPW	2' 0 3/4"	2' 3 3/4"	9	TYPE I
41CPW	2' 1 1/4"	2' 2 3/4"	9.5	II
5CPW	2' 10 3/4"	2' 2 3/4"	10	III
51CPW	2' 10 3/4"	2' 1 3/4"	10.5	III
51CPW	2' 9 3/4"	2' 0 3/4"	11	III
53CPW	2' 9 3/4"	2' 0 3/4"	11.5	III
61DPW	3' 0 3/4"	2' 3 3/4"	13	I
7DPW	2' 11 3/4"	2' 2 3/4"	14	II
71DPW	2' 10 3/4"	2' 1 3/4"	15	III
8DPW	2' 9 3/4"	2' 0 3/4"	16	III
81DPW	2' 8 3/4"	2' 0 3/4"	17	III
81EPW	3' 0 3/4"	2' 3 3/4"	17	I
9DPW	2' 8 3/4"	1' 11 3/4"	18	IV
9EPW	2' 11 3/4"	2' 2 3/4"	18	I
91EPW	2' 10 3/4"	2' 2 3/4"	19	III
10EPW	2' 10 3/4"	2' 1 3/4"	20	III
101EPW	2' 9 3/4"	2' 0 3/4"	21	III
11EPW	2' 9 3/4"	2' 0 3/4"	22	III
11FPW	2' 11 3/4"	2' 3 3/4"	22	I
12EPW	2' 8 3/4"	1' 11 3/4"	24	IV
12FPW	2' 10 3/4"	2' 1 3/4"	24	III
13EPW	2' 7 3/4"	1' 10 3/4"	26	IV
13FPW	2' 9 3/4"	2' 0 3/4"	26	III
13CPW	2' 11 3/4"	2' 3 3/4"	26	I
14FPW	2' 8 3/4"	2' 0 3/4"	28	III
14CPW	2' 10 3/4"	2' 2 3/4"	28	III
16FPW	2' 7 3/4"	1' 10 3/4"	32	IV
16CPW	2' 9 3/4"	2' 0 3/4"	32	III
16HPW	2' 11 3/4"	2' 2 3/4"	32	II
18CPW	2' 7 3/4"	1' 11 3/4"	36	IV
18HPW	2' 9 3/4"	2' 0 3/4"	36	III
18JPW	2' 11 3/4"	2' 2 3/4"	36	II
20CPW	2' 6 3/4"	1' 10 3/4"	40	IV
20HPW	2' 8 3/4"	1' 11 3/4"	40	IV
20JPW	2' 9 3/4"	2' 1 3/4"	40	III
20KPW	2' 11 3/4"	2' 2 3/4"	40	II

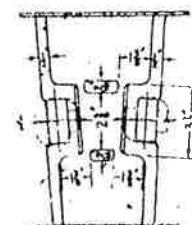
NOTES

The baseplates shown are for accommodating double wing rail extensions in common crossings. ξ are designated by the baseplate, followed by PW. e.g. 10CPW.

For details of baseplates with one wing rail only extended, see P.W Notes - R. 4320.

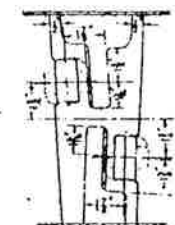


TYPE I

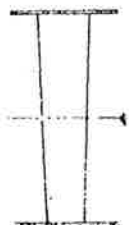


TYPE II

PLANS OF INTERNAL ARRANGEMENTS AT SHOULDERS.



TYPE III



TYPE IV

From RE/PW/102 (R.8102).