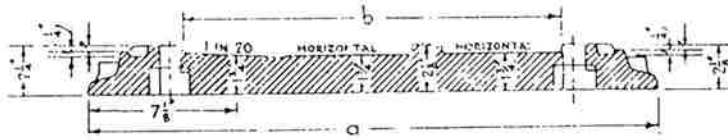


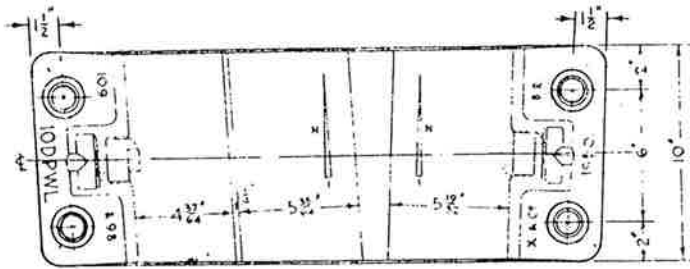
PERMANENT WAY NOTES

FBI091b. COMMON CROSSING BASEPLATES TO TAKE PARALLEL WING RAILS. ②

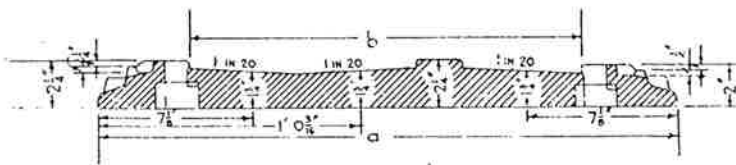
THESE NOTES ARE INTENDED FOR THE GUIDANCE AND ASSISTANCE OF STAFF ENGAGED UPON PERMANENT WAY WORK. THEY DO NOT IN ANY WAY MODIFY, SUPPLEMENT OR AMEND THE INSTRUCTIONS LAID DOWN IN E.D.I., STANDARD DRAWINGS CIRCULARS ETC., WHICH SHOULD BE REFERRED TO IN ALL CASES.



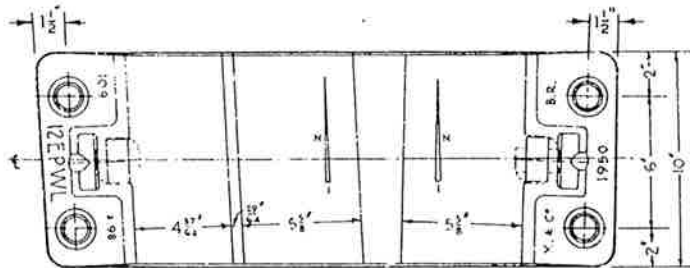
SECTION ON ϕ



BASEPLATE 109 & 98	a	b	N	INTERNAL ARRANGEMENT
6CPWR-L	2' 3 3/4"	1' 7 1/4"	12	TYPE III
6 1/2CPWR-L	2' 2 1/4"	1' 6 3/4"	13	TYPE III
7CPWR-L	2' 2 1/4"	1' 5 1/4"	14	TYPE III
7 1/2CPWR-L	2' 1 3/4"	1' 4 1/4"	15	TYPE III
8CPWR-L	2' 1 1/4"	1' 4 1/4"	16	NO SHOULDER
8 1/2CPWR-L	2' 0 1/4"	1' 3 3/4"	17	TYPE III
9CPWR-L	2' 0 1/4"	1' 3 3/4"	18	TYPE III
9 1/2CPWR-L	1' 11 3/4"	1' 3 1/4"	19	TYPE III
9 3/4DPWR-L	2' 2 1/4"	1' 6 1/4"	19	TYPE IV
10CPWR-L	1' 11 1/4"	1' 2 1/4"	20	NO SHOULDER
10DPWR-L	2' 2 1/4"	1' 5 1/4"	20	TYPE IV
10 1/2DPWR-L	2' 1 3/4"	1' 5 1/4"	21	TYPE IV
11DPWR-L	2' 1 3/4"	1' 4 1/4"	22	TYPE IV
12DPWR-L	2' 0 3/4"	1' 4 1/4"	24	NO SHOULDER
13DPWR-L	2' 0 1/4"	1' 3 3/4"	26	TYPE IV
14DPWR-L	1' 11 3/4"	1' 3 3/4"	28	TYPE IV
14EPWR-L	2' 1 3/4"	1' 3 3/4"	28	TYPE IV
16DPWR-L	1' 10 1/4"	1' 2 3/4"	32	NO SHOULDER
16EPWR-L	2' 0 1/4"	1' 4 3/4"	32	TYPE IV
18DPWR-L	1' 10 1/4"	1' 1 3/4"	36	NO SHOULDER
18EPWR-L	1' 11 3/4"	1' 3 3/4"	36	TYPE IV
18FPWR-L	2' 1 3/4"	1' 4 3/4"	36	TYPE IV
20DPWR-L	1' 9 1/4"	1' 1'	40	NO SHOULDER
20EPWR-L	1' 11 1/4"	1' 2 3/4"	40	TYPE IV
20FPWR-L	2' 0 1/4"	1' 4'	40	TYPE IV



SECTION ON ϕ



BASEPLATE 109 & 98	a	b	N	INTERNAL ARRANGEMENT
4 1/2CPWR-L	2' 7 1/4"	1' 10 1/4"	9	TYPE III
4 3/4CPWR-L	2' 6 3/4"	1' 9 3/4"	9 1/2	TYPE III
5CPWR-L	2' 5 1/4"	1' 9'	10	TYPE III
5 1/2CPWR-L	2' 5 1/4"	1' 8 3/4"	10 1/2	TYPE III
5 3/4CPWR-L	2' 4 3/4"	1' 7 3/4"	11	TYPE III
5 1/2CPWR-L	2' 5 1/4"	1' 7 1/4"	11 1/2	TYPE III
6 1/2DPWR-L	2' 7 3/4"	1' 10 1/4"	13	TYPE III
7DPWR-L	2' 6 3/4"	1' 9 1/4"	14	TYPE III
7 1/2DPWR-L	2' 5 3/4"	1' 8 3/4"	15	TYPE III
8DPWR-L	2' 4 3/4"	1' 7 3/4"	16	TYPE III
8 1/2DPWR-L	2' 3 3/4"	1' 7 1/4"	17	TYPE III
8 1/2EPWR-L	2' 7 1/4"	1' 10 1/4"	17	TYPE III
9DPWR-L	2' 3 1/4"	1' 6 3/4"	18	TYPE IV
9EPWR-L	2' 6 3/4"	1' 9 3/4"	18	TYPE III
9 1/2EPWR-L	2' 5 3/4"	1' 9 1/4"	19	TYPE III
10EPWR-L	2' 5 1/4"	1' 8 1/4"	20	TYPE III
10 1/2EPWR-L	2' 4 1/4"	1' 7 1/4"	21	TYPE III
11EPWR-L	2' 4'	1' 7 1/4"	22	TYPE III
11FPWR-L	2' 6 1/4"	1' 10 1/4"	22	TYPE III
12EPWR-L	2' 3 3/4"	1' 6 3/4"	24	TYPE IV
12FPWR-L	2' 5 3/4"	1' 8 3/4"	24	TYPE III
13EPWR-L	2' 2 3/4"	1' 5 3/4"	26	TYPE IV
13FPWR-L	2' 4 3/4"	1' 7 3/4"	26	TYPE III
13GPWR-L	2' 6 3/4"	1' 10 1/4"	26	TYPE III
14FPWR-L	2' 3 3/4"	1' 7 1/4"	28	TYPE III
14GPWR-L	2' 5 3/4"	1' 9 3/4"	28	TYPE III
16FPWR-L	2' 2 3/4"	1' 5 3/4"	32	TYPE IV
16GPWR-L	2' 4 3/4"	1' 7 3/4"	32	TYPE III
16HPWR-L	2' 6 1/4"	1' 9 3/4"	32	TYPE III
18GPWR-L	2' 2 3/4"	1' 6 3/4"	36	TYPE IV
18HPWR-L	2' 4 3/4"	1' 7 3/4"	36	TYPE III
18JPWR-L	2' 6 1/4"	1' 9 3/4"	36	TYPE III
20GPWR-L	2' 1 3/4"	1' 5 1/4"	40	TYPE IV
20HPWR-L	2' 3 3/4"	1' 6 3/4"	40	TYPE IV
20JPWR-L	2' 4 3/4"	1' 8 1/4"	40	TYPE III
20KPWR-L	2' 6 3/4"	1' 9 3/4"	40	TYPE II

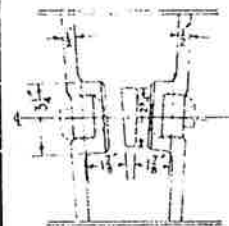
NOTES: The baseplates shown are for accommodating single wing rail extensions in common crossings.

The baseplates are handed left or right, defined by the lie of the extended wing rail as seen from a point in front of the nose, and are designated by the baseplate followed by 'PWL' or 'PWR' as the case may be, e.g. 10CPWL.

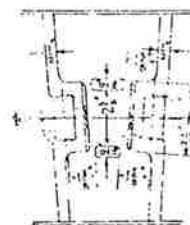
Illustrations and dimensions are given for 'PWL' baseplates, but 'PWR' types will be manufactured to these dimensions also, and in form will be mirror reflections of the 'PWL' baseplates.

For details of baseplates with both wing rails extended see P.W. Notes-R.4319.

From RE/PW/102(R.8102)



TYPE I



TYPE II

PLANS OF INTERNAL ARRANGEMENT AT SHOULDERS

AT SHOULDERS



TYPE III



TYPE IV