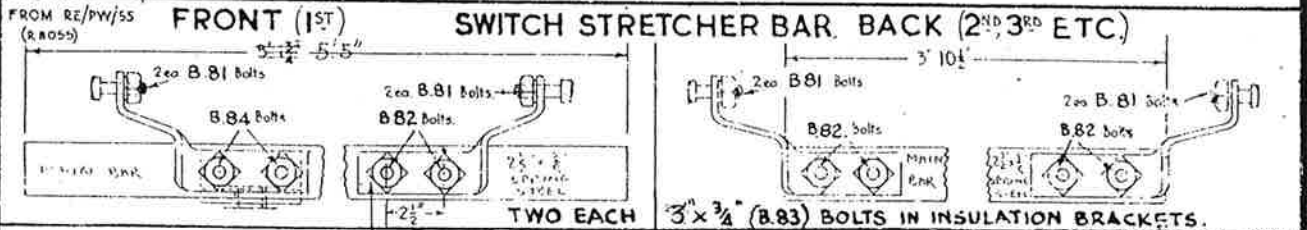


NOTES

FOR BR.109.FB.
BS.110A.FB

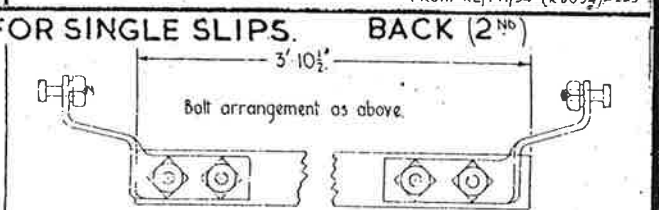
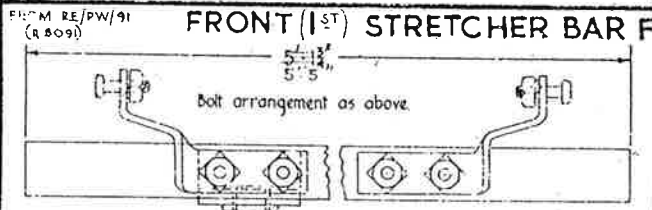
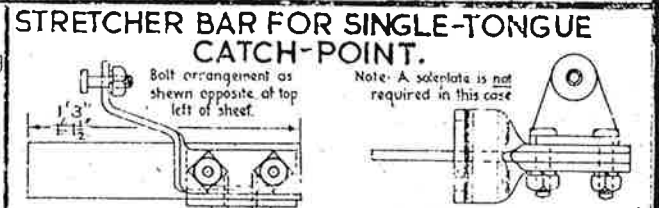
SWITCHES.

THESE NOTES ARE INTENDED FOR THE GUIDANCE AND ASSISTANCE OF STAFF ENGAGED UPON PERMANENT WAY WORK. THEY DO NOT IN ANY WAY MODIFY, SUPPLEMENT OR AMEND THE INSTRUCTIONS LAID DOWN IN E.D.I, STANDARD DRAWINGS CIRCULARS ETC., WHICH SHOULD BE REFERRED TO IN ALL CASES.



Note: Bolts for insulation are B.83 3/4" dia. by 3" long. For details of all the bolts see P.V. Notes Sheet R.4310 A.

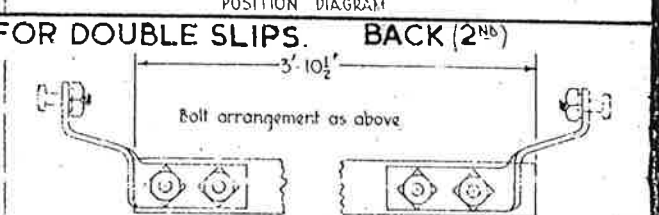
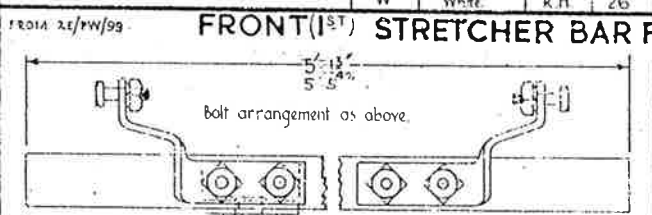
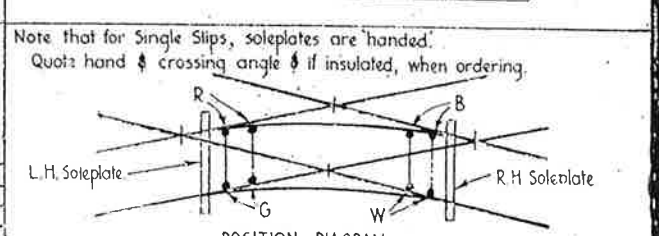
Note: This bracket supplied loose on all 2-bracket bars. Bracket to be drilled with bar (1/2" holes) for driving fit and to be fixed to suit in situ.



Drawn as R.H. Bracket

Bracket	Painted	Hand	N.
R	Red	L.H.	16
G	Grey	L.H.	26
B	Black	R.H.	16
W	White	R.H.	26

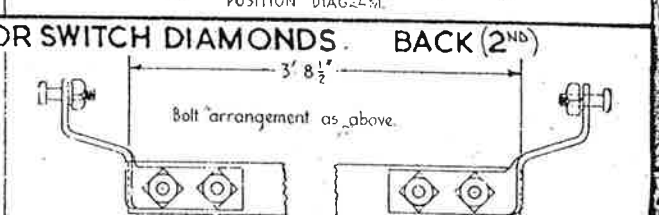
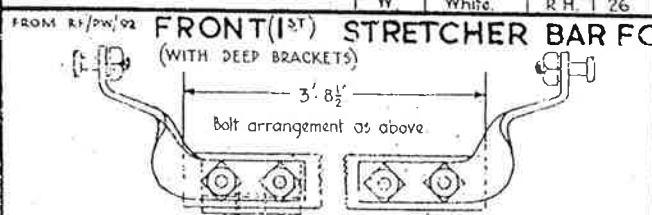
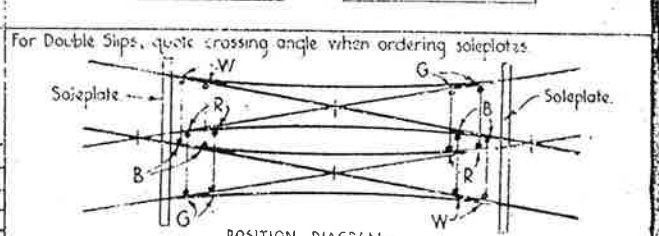
R.H. Bracket (Full)
L.H. Bracket (Dotted)



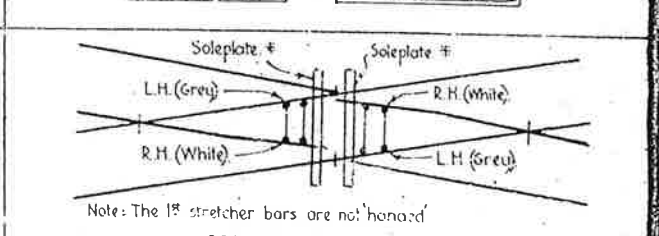
Drawn as L.H. Bracket

Bracket	Painted	Hand	N.
R	Red	L.H.	16
G	Grey	L.H.	26
B	Black	R.H.	16
W	White	R.H.	26

R.H. Bracket (Full)
L.H. Bracket (Dotted)



NOTE: FOR SWITCH DIAMONDS ONLY INSULATED SOLEPLATES ARE HANDED, THE HAND BEING DETERMINED BY THE LIE OF THE INSULATION OF THE SOLEPLATE AS VIEWED FROM THE TOES OF THE APPROPRIATE SWITCHES. QUOTE CROSSING ANGLE & THE HAND (IF INSULATED) WHEN ORDERING. AVAILABLE ANGLES ARE: 1, 7 1/2, 9, 10, 12 & 14.



ORDERING OF STRETCHER BARS: DESCRIBE AS ABOVE, SPECIFYING FOR 1B SWITCHES, AND STATING IF INSULATED OR POWER OPERATED. ALSO QUOTE 'HAND' OF BRACKETS IF FOR SINGLE OR DOUBLE SLIPS, (FOR EITHER 1" OR 2" BARS). SOLEPLATES ARE SUPPLIED ALREADY DRILLED AND IT IS NECESSARY TO QUOTE THE CROSSING ANGLE WHEN REQUIRED FOR SINGLE AND DOUBLE SLIPS AND SWITCH DIAMONDS, AND ALSO THE 'HAND' IN THE CASE OF SINGLE SLIPS AND INSULATED SWITCH DIAMONDS. SOLEPLATES FOR SWITCHES B.C, D, E, F, ARE MADE AND DRILLED TO ONE COMMON PATTERN.