

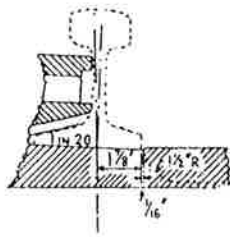
PERMANENT WAY
NOTES

B.R.109 FB. &
B.S.110A FB.

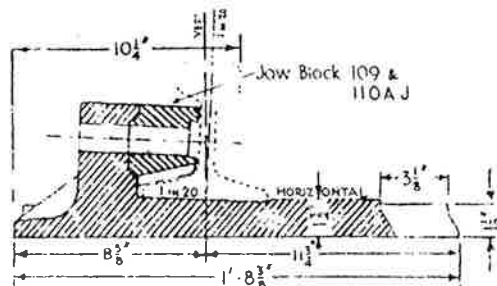
SLIDE BASEPLATES
FOR SLIPS

THESE NOTES ARE INTENDED FOR THE GUIDANCE AND ASSISTANCE OF STAFF ENGAGED UPON PERMANENT WAY WORK. THEY DO NOT IN ANY WAY MODIFY, SUPPLEMENT OR AMEND THE INSTRUCTIONS LAID DOWN IN THE STANDARD DRAWINGS CIRCULARS ETC., WHICH SHOULD BE REFERRED TO IN ALL CASES.

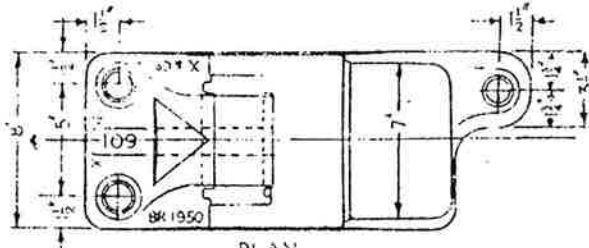
For details of Jaw Block
see P.W. Notes Sheet R4293



PXX3



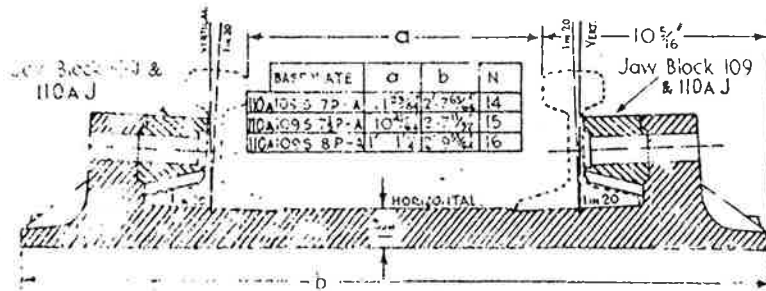
SECTION ON ϕ SPX



PLAN

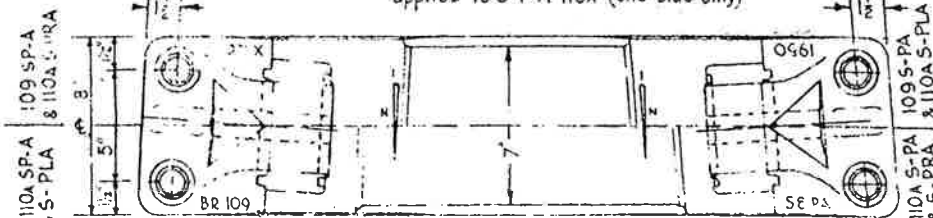
109
110A

SPX
PXX3



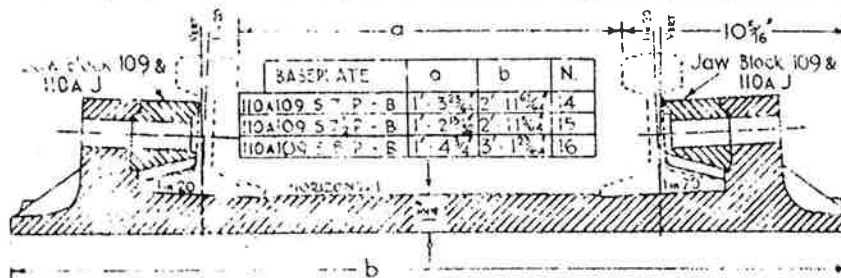
SECTION ON ϕ S-PA 109
applies to S-P-A 110A (one side only)

S-PA 110A (both sides)
S-P-A 110A (one side only)



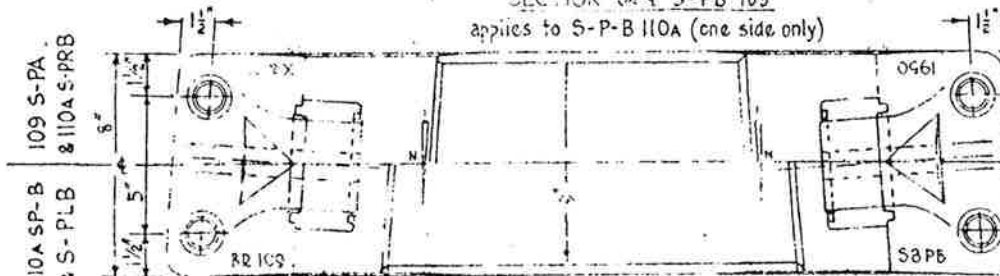
PLAN

109
110A
110A
S-PA
S-P-A



SECTION ON ϕ S-PB 109
applies to S-P-B 110A (one side only)

S-PB 110A (both sides)
S-P-B 110A (one side only)



PLAN

109
110A
110A
S-PB
S-P-B

FROM RE/PW/79.2.216