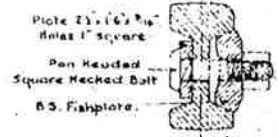
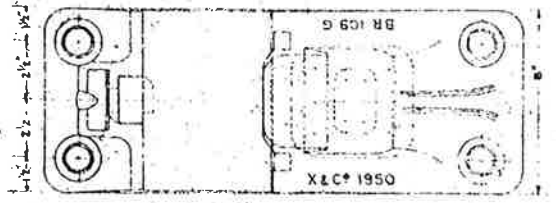
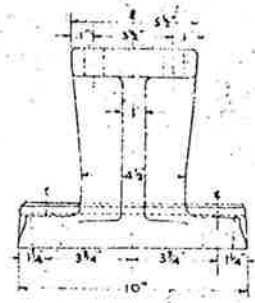
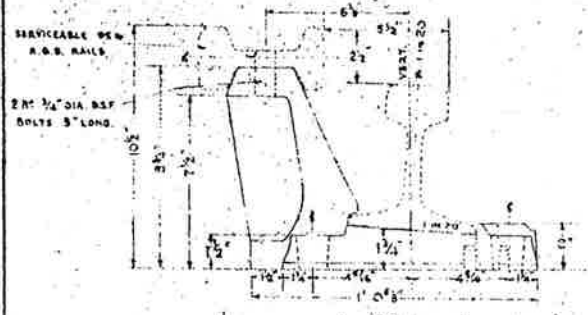


NOTES
 THIS BASEPLATE IS DESIGNED FOR USE WITH INSIDE GUARD RAILS WITH ALLEYPED TRACK. THE INSIDE OF THE FOOT OF THE RUNNING RAIL MAY BE HELD BY TWO ELASTIC RAIL SPIKES TYPE T.B. ONE LEFT HAND AND ONE RIGHT HAND SPIKE FOR EACH BASEPLATE. (SEE DRG. NO. RE/PW/86.)

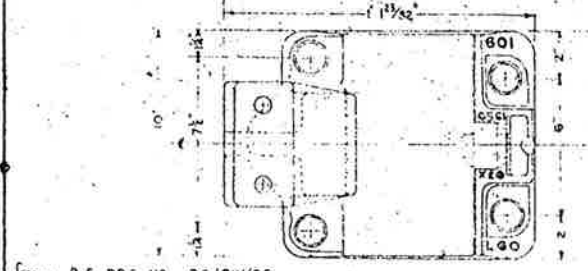


DETAIL OF FASTENING
 95 LB. R.B.S. GUARD RAIL: **G**

from R.E. DRG. NO. RE/PW/93.

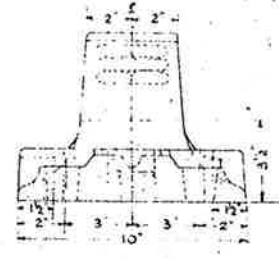
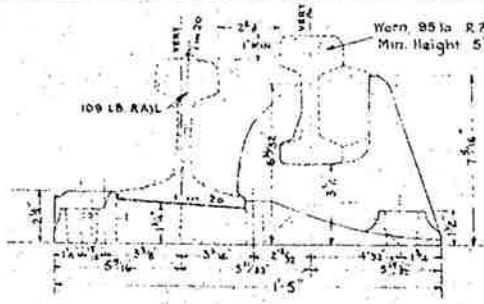


NOTE
 THIS BASEPLATE IS DESIGNED FOR USE WITH OUTSIDE GUARD RAILS. (SEE DRG. NO. RE/PW/94.)

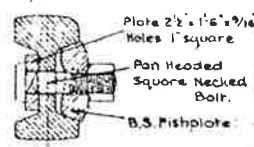


LGO

from R.E. DRG. NO. RE/PW/95.



NOTES
 THIS BASEPLATE IS DESIGNED FOR USE WITH INSIDE GUARD RAILS (SEE DRG. NO. RE/PW/86.) AND WITH RE-RAILING DEVICE FOR OUTSIDE GUARD RAILS (SEE DRG. NO. RE/PW/94). THE INSIDE OF THE FOOT OF THE RUNNING RAIL MAY BE HELD BY TWO ELASTIC RAIL SPIKES TYPE T.B. ONE LEFT HAND AND ONE RIGHT HAND SPIKE FOR EACH BASEPLATE.



DETAIL OF FASTENING
 95 lb. R.B.S. GUARD RAIL: **LG**

from R.E. DRG. NO. RE/PW/85.

THE RAILWAY EXECUTIVE BRITISH RAILWAYS WESTERN REGION.

F.B. 109 LB. C.I. BASEPLATES FOR GUARD RAILS.

INFORMATION SHEET (CIVIL ENG) W.

These notes are intended for the guidance and assistance of staff engaged upon Permanent Way work. They DO NOT in any way constitute a contract.

PERMANENT WAY

R.43

JULY/