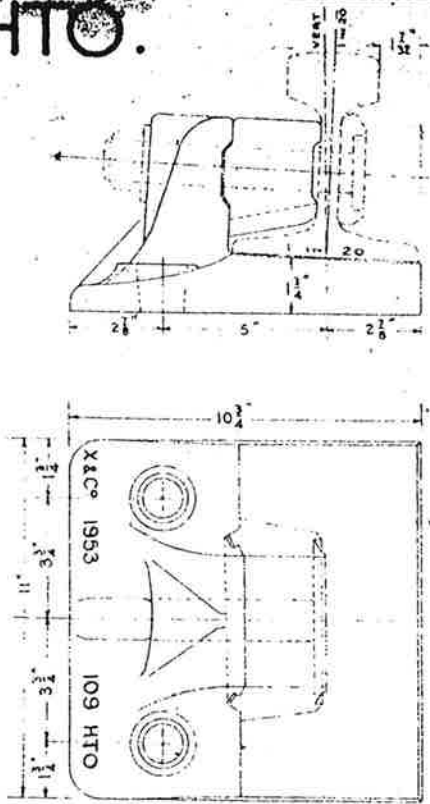


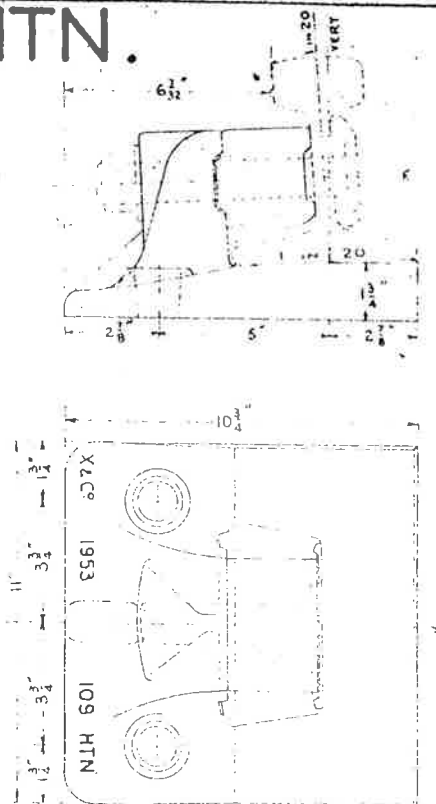
HTO.



Superseding the STO Baseplate shown on P.W. Notes Sheet No R 4154.

From RE/PW 142

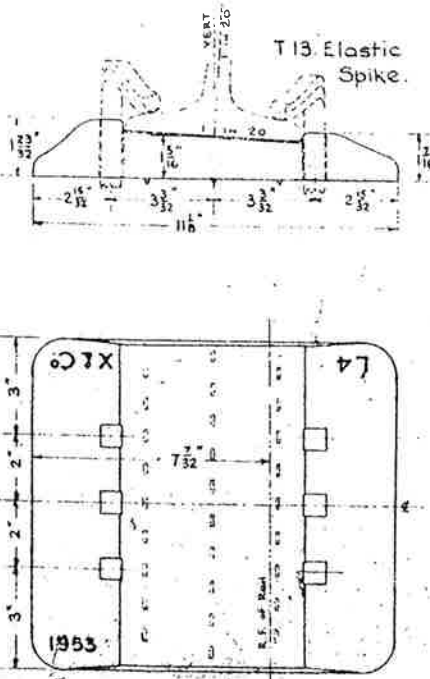
HTN.



Superseding the STN Baseplate shown on P.W. Notes Sheet No R 4154

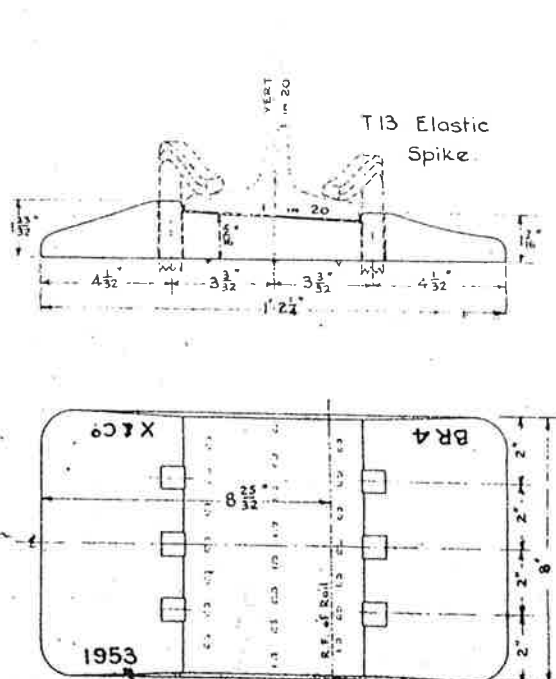
from RE/PW/142

L4.



From RE/PW/141A

BR4.



From RE/PW/76B

THE RAILWAY EXECUTIVE.

BRITISH RAILWAYS

WESTERN REGION.

C.I. BASEPLATES FOR F.B. TRACK.

INFORMATION SHEET (CIVIL ENG) W.R.

These notes are intended for the guidance and assistance of staff engaged upon Permanent Way work. They DO NOT in any way modify, supplement or amend the instructions laid down in E.C.I., std. dros., circulars etc., which should be referred to in all cases.

PERMANENT WAY NOTES

R.435

CFD 5