

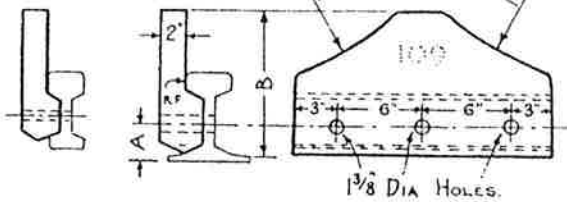
PERMANENT WAY NOTES

WHEEL STOPS

THESE NOTES ARE INTENDED FOR THE GUIDANCE AND ASSISTANCE OF STAFF ENGAGED UPON PERMANENT WAY WORK. THEY DO NOT IN ANY WAY MODIFY, SUPPLEMENT OR AMEND THE INSTRUCTIONS LAID DOWN IN E.D.I., STANDARD DRAWINGS, CIRCULARS ETC. WHICH SHOULD BE REFERRED TO IN ALL CASES

FB 109, FB 98, BS 95 (NOT W.R.)

FIXING BOLTS: $6\frac{1}{2} \times 1\frac{1}{8}$ DIA. CROSSING BOLTS WITH.....SEC. PARALLEL TYPE WASHER & PLAIN WASHERS.

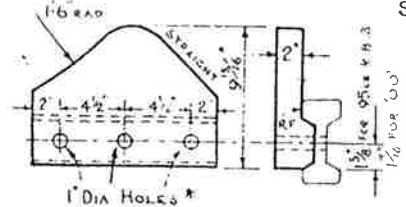


DIMENSION	109 LB FB	98 LB FB	95 LB R.B.S. (NOT W.R.)
A	$2\frac{3}{16}$	$2\frac{11}{32}$	$2\frac{35}{64}$
B	$10\frac{3}{16}$	$9\frac{5}{8}$	$9\frac{13}{32}$

RE/PW/503A

BS 95^a, 00.

FIXING BOLTS: $5 \times \frac{7}{8}$ with washers.
or: $4\frac{13}{16} \times 1$ Flathead bolts for SS chairs



* holes to be drilled $1\frac{1}{16}$ specially.

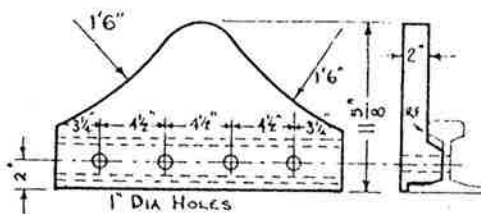
BS 95^a R 1795
00 R 1581

MADE RH & LH, DRAWN RH.

wt 62lb approx

BS 85 FB

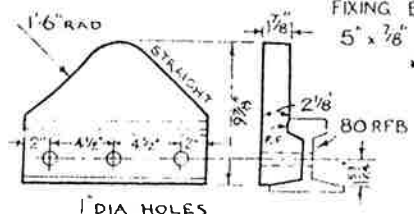
FIXING BOLTS. $5 \times \frac{7}{8}$ with washers



Sn 75573

BS 80 FB BS 110 FB (MACHINED TO SUIT)

FIXING BOLTS

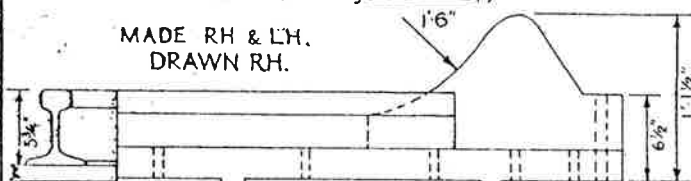


MADE RH & LH, DRAWN RH.

Sn 97294

BS 110 FB, BS 120 FB (1/4" packing under stop).

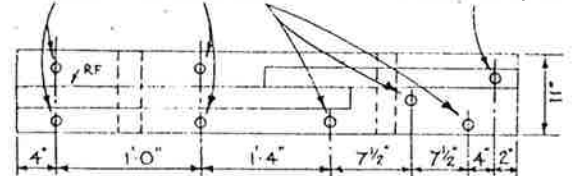
MADE RH & LH.
DRAWN RH.



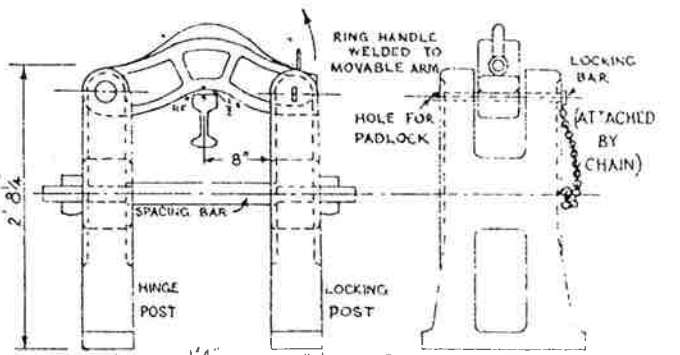
Sn 39024

$\frac{7}{8} \times 7$ Coachscrews

$\frac{7}{8} \times 12$ C'screw



C.I. GATE PATTERN (STANDARD) N° 492^a

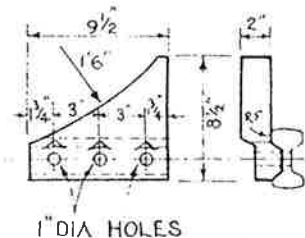


R 6103

Order complete with bolts and accessories.

CAM 72 & 80, 86A.

FIXING BOLTS: $3\frac{3}{4} \times \frac{7}{8}$ with washers



MADE RH & LH, DRAWN RH

R 1152

GATE PATTERN (TIMBER)



R 2919

Wheelstops (fixed) also available for GW 92 (Sdn Drg L14335) not handed

A movable pattern Wheelstop for operating by hand-lever is supplied by the Signal Dept. Quote Sig. Dept Drg No. ME 6318/2 when ordering.

Order Gate Pattern Wheelstops complete. Specify rail section, bolts & accessories for all other types. Quote Drg N°. in each case.

R. 4414

CHIEF CIVIL ENGINEERS OFFICE

PADDINGTON

AUG 1956