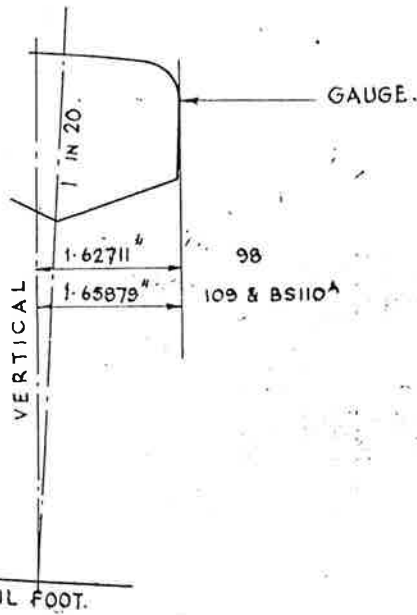


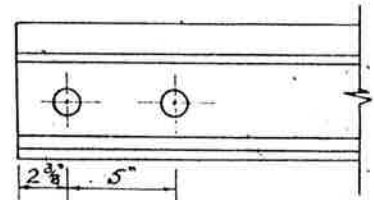
# PERMANENT WAY NOTES

# F.B. RAIL SECTIONS.

THESE NOTES ARE INTENDED FOR THE GUIDANCE AND ASSISTANCE OF STAFF ENGAGED UPON PERMANENT WAY WORK. THEY DO NOT IN ANY WAY MODIFY, SUPPLEMENT OR AMEND THE INSTRUCTIONS LAID DOWN IN E.D.I., STANDARD DRAWINGS, CIRCULARS ETC., WHICH SHOULD BE REFERRED TO IN ALL CASES.



RAIL SECTION	98 lb	109 lb	BS110A	UNIT
WEIGHT	98.2	109.2	109.75	LB
SECTIONAL AREA	9.64	10.72	10.75	INS <sup>2</sup>
NEUTRAL AXIS TO BOTTOM	2.66	2.96	2.94	INS
MOMENT OF INERTIA - XX	40.8	55.7	56.30	INS <sup>4</sup>
MOMENT OF INERTIA - YY	8.78	9.67	9.37	INS <sup>4</sup>
SECTION MODULUS - TOP	13.79	16.93	16.99	INS <sup>3</sup>
SECTION MODULUS - BOTTOM	15.33	18.82	19.03	INS <sup>3</sup>



CIRCULAR HOLES  $1\frac{3}{16}$ " DIA FOR RAILS SUPPLIED TO B.R. ONLY AND NOT AS SHOWN IN B.S. 11-59

